

User Manual

Version 1.0 – UMFN4501



Evercode™ Nuclei

Fixation v4

High Throughput Workflow

For use with

ECFN4501



Support Suite

Legal Notices

This document and its contents are proprietary to Parse Biosciences, Inc. ("Parse Biosciences") and are intended solely for use by its customers in connection with the use of the product(s) described herein and for no other purpose. The products may be used solely FOR RESEARCH PURPOSES, AND MAY NOT BE USED IN ANY DIAGNOSTIC OR THERAPEUTIC USE IN HUMANS OR ANIMALS. This document and its contents shall not be used or distributed for any other purpose and/ or otherwise communicated, disclosed or reproduced in any way whatsoever without the prior written consent of Parse Biosciences.

No rights are granted under this document with respect to any of Parse Biosciences' intellectual property rights. The license to use of any products described herein is subject to a separate written agreement between Parse Biosciences and the applicable user.

The instructions in this document must be strictly and explicitly followed by qualified and properly trained personnel in order to ensure the proper and safe use of the product(s) described herein. Parse Biosciences shall have no liability for any direct, indirect, consequential or incidental damages arising out of any failure to use the product(s) in strict compliance with the terms herein.

This document may contain references to third-party sources of information, hardware or software, products, or services and/ or third-party web sites (collectively "Third Party Information"). Parse Biosciences does not control, and is not responsible for, any Third Party Information. The inclusion of Third Party Information in this document does not imply endorsement by Parse Biosciences of the Third Party Information or the third party in any way.

The product(s) described in this document are provided for one-time use by the purchaser and may not be re-used, refurbished or resold. In addition, such product(s) may not be altered, changed or modified by anyone other than Parse Biosciences and its authorized agents, and Parse Biosciences will not be liable for any such alterations, changes or modifications. The product(s) described herein may be covered by one or more of the following patents:

U.S. Pat. No. 10,900,065

U.S. Pat. No. 11,168,355

U.S. Pat. No. 11,427,856

U.S. Pat. No. 11,634,751

U.S. Pat. No. 11,639,519

U.S. Pat. No. 11,680,283

Patents pending in the U.S. and other countries

PARSE and EVERCODE are trademarks of Parse Biosciences, Inc. The information made available herein is the sole property of Parse Biosciences and its licensors.

Copyright (c) 2024-2026 Parse Biosciences, Inc. All Rights Reserved.

Table of Contents

Overview	4
Workflow	4
Protocol Timing.....	6
Important Guidelines	7
Part List	12
User Supplied Equipment and Materials.....	13
Section 1: Set Up	15
1.1. Block Plates with BSA	15
1.2. Prepare Master Mixes	17
Section 2: Fixation	20
2.1. Nuclei Fixation	20
Appendix: Revision History	25

Overview

Workflow

From a single nuclei suspension, the Evercode Nuclei Fixation v4 kit generates fixed and permeabilized nuclei ready for use in the Evercode kits.

This high-throughput plate-based workflow enables more samples to be fixed in parallel, streamlining fixation when processing ≥ 48 samples at a time.

Fixation maintains nuclei structure and prevents RNA degradation, which are crucial for downstream processing with Evercode split-pool combinatorial barcoding technology (Figure 1).

Because fixed samples are also stable for up to 6 months at -80°C , Evercode Nuclei Fixation v4 provides flexibility by separating sample collection from library preparation. It also enables samples to be stored and batched after fixation so they can be processed through library preparation together, reducing the potential of batch effects.

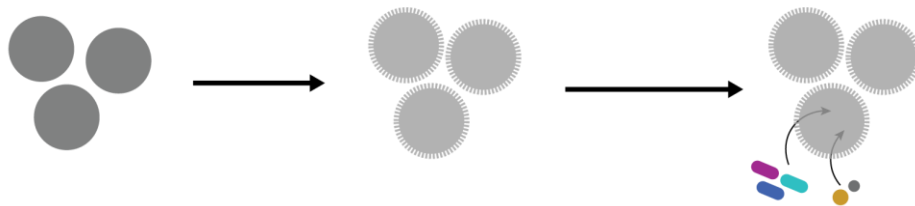


Figure 1: Evercode Nuclei Fixation v4. Nuclei in suspension are fixed and permeabilized before undergoing the split-pool combinatorial barcoding steps.

The figure below provides an overview of the fixation workflow. Between 100,000 and 1 million nuclei can be fixed in a single reaction. Note that more than 100,000 nuclei may need to be fixed to fully utilize the capacity of the downstream Evercode kits. See Important Guides for additional details.

This high-throughput plate-based workflow is designed for use with the Evercode™ Nuclei Fixation v4, HT 96 reactions kit when processing ≥ 48 samples across up to 2 fixation sessions. If the kit is to be used more than twice, the mid-throughput plate-fixation protocol should be used instead.

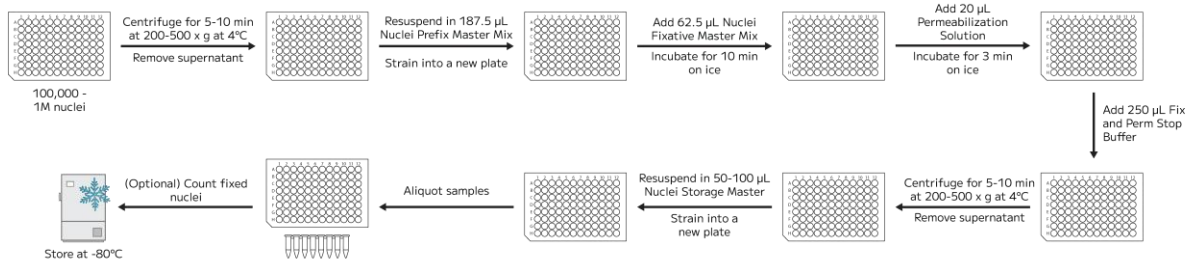


Figure 2: High-Throughput Plate-Based Fixation Evercode Nuclei Fixation v4 Workflow.

Protocol Timing

The table below provides details of the total and hands-on time required for the nuclei fixation workflow.

SECTION	TOTAL TIME	HANDS-ON TIME	STOPPING POINTS
Section 1: Set Up			
1.1 Block plates with BSA	65 min	5 min	4°C ≤ 1 month
1.2 Prepare Master Mixes	15 min	15 min	
Section 2: Fixation			
2.1 Nuclei Fixation	60 min	60 min	-80°C ≤ 6 months

Important Guidelines

These guidelines provide additional information to obtain optimal performance beyond the detailed instructions in the protocol. For additional questions not discussed below, please contact us at support@parsebiosciences.com. We also have a library of additional resources and videos on our support site at <https://support.parsebiosciences.com/>.

Sample Input

- This protocol begins with a previously prepared single nuclei suspension. We recommend suspensions with <5% aggregation/debris.
- If nuclei were previously frozen, ensure the suspension is completely thawed and in suspension before beginning fixation.
- We recommend minimizing the length of time between nuclei isolation and fixation, as it can negatively impact the results. Store the samples on ice the entire time.
- Between 100,000 and 1 million nuclei can be fixed in a single reaction. However, we recommend using the highest number available up to 1 million total. Exceeding 1 million nuclei in a single fixation will result in substantially elevated doublet rates.
- The minimum input into fixation should also be determined based on how the samples will be processed downstream. The table below provides guidance on the post-fixation concentrations needed for downstream kits. However, more or less sample input may be required depending on the exact experimental design. To accurately determine required post-fixation nuclei concentrations and volumes, reference the relevant [Sample Loading Table](#).
- Note that retention during fixation varies typically between 40-60%, and some nuclei will be lost when freezing and thawing fixed samples, typically between 5-15%.

NUCLEI CONCENTRATION		
Kit	Target Post-Fixation Concentration (nuclei/ μ L)	Minimum Post-Thaw Concentration to Fully Load Kit (nuclei/ μ L)
Evercode WT Mini	>500	298
Evercode WT	>1,000	520
Evercode WT Mega	>3,000	2,126
Evercode WT Mega 384	>1,000	651

NUCLEI CONCENTRATION		
Evercode WT Penta	4,500–5,000	4,114
Evercode WT Penta 384	4,200-5,000	3,255



Note: We do not recommend storing more than 5,000 nuclei/ μ L after fixation, as higher concentrations may increase the likelihood of doublet formation.

Avoiding RNase Contamination

- Standard precautions should be taken to avoid introducing RNases into samples or reagents throughout the workflow. Always wear proper laboratory gloves and use aseptic technique.
- Although RNases are not inactivated by ethanol or isopropanol, they are inactivated by products such as RNaseZap RNase Decontamination Solution (Thermo Fisher Scientific). These can be sprayed on benchtops and pipettes.
- Nuclease-free, filtered pipette tips should be used to reduce RNase contamination from pipettes.

Plate Strainers

- An example video of using a Plate Strainer can be found on our support site. We recommend watching this video and practicing using Plate Strainers before processing your samples.
- After opening their plastic sleeves, Plate Strainers should be stored in their original plastic sleeve until use and used on the same day they were opened. We do not recommend using Plate Strainers more than one day after the plastic sleeve has been opened.
- Plate Strainers may need to be cut prior to processing samples. Plate Strainers should be cut with sterile scissors, razor blade, or scalpel that have been cleaned with RNaseZap RNase Decontamination Solution (Thermo Fisher Scientific) immediately prior to use.
- Plate Strainers should be thoroughly adhered to 96 well plates prior to use. After being placed by hand, a plate seal applicator should be used to completely seal the strainer over each well by pressing along the outside of the wells. The plate seal applicator should be cleaned with RNaseZap RNase Decontamination Solution (Thermo Fisher Scientific) immediately prior to use. Applicators should never be pressed directly onto the mesh.

- To maximize nuclei retention with Plate Strainers, press pipette tips directly against the mesh. Ensure ample pressure is applied to hold contact between the tip and the strainer to force liquid through in ~1 second.

Nuclei Counting and Quality Assessment

- We recommend a hemocytometer for counting, but alternative counting devices can also be used. If possible, validate counts from alternative devices to a hemocytometer when first using Evercode Fixation v4 kits.
- We suggest saving images at each counting step, especially when first using Evercode Fixation v4 kits.
- To assess sample quality, we recommend using viability stains like trypan blue or acridine orange and propidium iodide (AO/PI).
- If using Acridine Orange/Propidium Iodide (AO/PI) stains, we suggest using the red (PI) channel to count to avoid the impact of any autofluorescence in the green (AO) channel.
- Examples of trypan blue stained fixed cells are shown below. High quality fixed samples have single distinct nuclei with <5% aggregation and no debris. Higher levels of aggregation will lead to elevated doublets after sequencing and may indicate a poor quality nuclei isolation. When quantifying fixed nuclei, it is critical to avoid counting debris to avoid overestimating the number of nuclei.

High Quality Sample



Aggregation



Debris

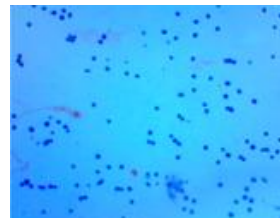


Figure 3: Example of trypan blue stained fixed cells.

Centrifugation

- A range of centrifugation speeds and durations are given in this protocol rather than a single speed. When using Evercode Fixation v kits for the first time or when testing a new sample type, we recommend optimizing centrifugation conditions in 1.5 mL tubes before using the plate-based workflows. See the [tube-based protocol in our support site](#) which includes detailed optimization recommendations.

- A swinging bucket rotor should be used for all high-speed centrifugation steps in this protocol. The use of a fixed-angle rotor will lead to substantial nuclei loss.

Maximizing Nuclei Recovery

- It is critical to thoroughly resuspend the nuclei after centrifugation throughout the protocol. Resuspend by slowly and repeatedly pipetting up and down until no clumps are visible. Ideally this should be verified with microscopy.
- To minimize nuclei loss from nuclei adherence to wells, carefully pipette up and down along the bottom and sides of plate's wells.
- We do not recommend wide bore pipette tips as they make it difficult to resuspend nuclei pellets adequately.
- When using Evercode Fixation v4 kits for the first few times, we recommend retaining the supernatants removed in Section 2, steps 9 and 29. In the unlikely event of very high sample loss, these supernatants can be analyzed to identify points for optimization.

Removing Supernatant from Plates

- When using the plate-based Evercode Fixation v4 workflow for the first time, we recommend practicing removing liquid from deep well plates without disturbing the bottom of the well.
- When removing supernatant, keep the pipette tips along the side of the wells to avoid disturbing the pellets. After removing most of the supernatant, we recommend tilting the plate at a 90 degree angle. This makes it easier to see the removal of residual supernatant from bottom and side of the plate.
- Less than 20 μL of supernatant should be left in each well after Section 2, steps 10 and 30. The figure below shows different volumes of supernatant when viewed from the bottom of the deep well plate.

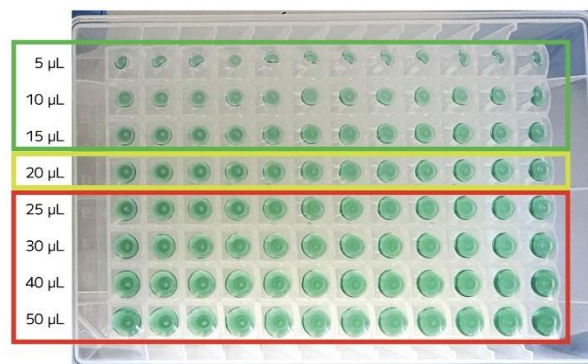


Figure 4: Bottom view of a deep well plate with different volumes of residual supernatant.

Reagent Stability

- Reagents in the Nuclei Fixation Reagents box should not be frozen and thawed more than 3 times.
- If the kit is going to be used more than 4 times, the reagents should be aliquoted into nuclease-free 1.5 mL tubes and stored at -20°C for up to 1 month. We do not recommend making single use aliquots to minimize the impact of evaporation during storage.
- To avoid pipetting <2 µL of RNase Inhibitor, we do not recommend preparing less than 2 reactions of Nuclei Storage Master Mix. If required, the master mix can be prepared without DMSO, split into aliquots, and stored at -20°C for up to a month. DMSO should be added prior to use in the protocol to a final concentration of 5%.

Storage of Fixed Samples

- Fixed samples can be stored at -80°C for up to 6 months. Fixed samples should not be refrozen after thawing.
- When possible, we recommend splitting samples into aliquots after fixation in Section 2, Step 37. The aliquots should be at least ≥ 20 µL when stored in 0.2 mL PCR tubes or tube strip(s).
When possible, we recommend splitting samples into aliquots after fixation in Section 2, Step 21. The aliquots should be ≥ 20 µL when stored in 1.5 mL tubes.
- We recommend making a 20 µL counting aliquot for each sample. This aliquot should be used to update sample concentrations in the Evercode Sample Loading Table before starting the Evercode workflow. The loss after freeze/thaw should match the sample. This will minimize the time between sample thawing and the start of the Evercode workflow.

Part List

The Evercode Nuclei Fixation v4, high-throughput plate workflow requires Nuclei Fixation Reagents and Nuclei Fixation Enhancer boxes.

Nuclei Fixation Reagents, 96 reactions. Store at -20°C, NF700

LABEL	ITEM	PN	FORMAT	QTY
	Prefixation Buffer	NF301	15 mL bottle	2
	Storage Buffer	NF302	8 mL bottle	2
	Fixative Solution	NF303	8 mL bottle	2
	Permeabilization Solution	NF313	2 mL tube	2
	Fix and Perm Stop Buffer	NF305	15 mL bottle	2
	RNase Inhibitor	NF306	1.5 mL tube	1
	DMSO	NF307	1.5 mL tube	1

Nuclei Prefixation Enhancer, 96 reactions. Store at 4°C, NF800

LABEL	ITEM	PN	FORMAT	QTY
	Prefixation Enhancer	NF401	2 mL tube	1

30 µm Plate Strainer. Store at Room Temperature

LABEL	ITEM	PN	FORMAT	QTY
N/A	Adhesive Plate Strainer, 30 µM	PCS1030	Plastic sleeve	2

User Supplied Equipment and Materials

The following materials and equipment are required to perform the protocol but are not provided within the kit. This list does not include standard laboratory equipment, such as freezers.

Equipment

ITEM	SUPPLIER	PN	NOTES
Centrifuge with Swinging Bucket Rotor	Various Suppliers	Varies	Compatible with 1.5 mL and 15 mL tubes and capable of reaching 4°C. Compatible with 96 deep well plates and capable of reaching 4°C.
Microcentrifuge	Various Suppliers	Varies	Compatible with 1.5 mL tubes.
1-channel: P20, P200, P1000 12-channel: P20, P200	Various Suppliers	Varies	Or 8-channel pipettes can be substituted for 12-channel pipettes.
Hemocytometer	Sigma-Aldrich®	Z359629	Or other nuclei counting device.
Styrofoam Cooler	Various Suppliers	Varies	(Optional) If storing fixed samples before processing with an Evercode Whole Transcriptome kit.
Water bath	Various Suppliers	Varies	(Optional) If preparing aliquots to count the day before running a downstream Evercode Whole Transcriptome kit. Or equivalent thermomixer, heat block, or bead bath capable of holding temperature at 37°C.

Reagents

ITEM	SUPPLIER	PN	NOTES
RNaseZap™ RNase Decontamination Solution	Thermo Fisher Scientific	AM9780	Or equivalent RNase decontamination solution.
Trypan Blue	Various Suppliers	Varies	Or alternative viability dyes, such as AO/PI.

ITEM	SUPPLIER	PN	NOTES
TrypLE™ Express OR TrypLE Select	Thermo Fisher Scientific	12605010 OR 12563011	(Optional) If using adherent cells. Trypsin is not recommended due to variable RNase levels.
Gibco™ Bovine Albumin Fraction V (7.5% solution)	Thermo Fisher Scientific	15260037	(Optional) If blocking tubes with BSA. Chosen due to its low RNase activity. Contact applications support for alternatives.

Consumables

ITEM	SUPPLIER	PN	NOTES
SealPlate®	Excel Scientific ®	100-SEAL- PLT	Or equivalent PCR plate seals. Note that many clear plastic seals are not designed for storage at -80°C, so we recommend using foil plate seals if storing fixed samples in PCR plates.
TempPlate® EXT Sealing Foil	USA Scientific ®	2998-0100	(Optional) If storing fixed samples in a PCR plate. Note that many clear plastic seals are not designed for storage at -80°C.
Protein LoBind® Plate	Eppendorf ®	951033308 (1 mL) 003050430 5 (2 mL)	Or equivalent polypropylene, nuclease-free, v-bottom, 1 mL or 2 mL deep well plates. Do not substitute polystyrene plates as it will lead to substantial cell loss. If possible, we recommend using protein low-binding plates.
Reagent basins	Various Suppliers	Varies	(Optional) If blocking deep well plates with BSA. Sterile, nuclease-free reagent basins.
Eppendorf twin.tec® PCR Plate 96 LoBind®	Eppendorf	003012950 4	Or equivalent DNA low-binding, nuclease-free PCR plate capable of holding 270 µL.
Falcon® High Clarity PP Centrifuge Tubes, 15 mL and 50mL	Corning®	352097 (15 mL) 352098 (50 mL)	Or equivalent polypropylene centrifuge tubes.
TempAssure® PCR 8-Tube Strips, 0.2 mL	USA Scientific ®	1402-4700	Or equivalent nuclease-free 0.2 mL PCR tubes.
Pipette Tips TR LTS 20 µL, 200 µL, 1,000 µL	Rainin®	17014961, 17014963, 17014967	Or appropriate DNA low-binding, low retention, DNase/RNase-free, and filtered pipette tips. Do not use wide bore tips.

Section 1: Set Up

1.1. Block Plates with BSA

Although not required, blocking plates with BSA can increase cell retention. When Protein LoBind plates are not available, we recommend blocking plates, especially for samples with low cell inputs or cells prone to aggregation.

To block plates:

1. Prepare a fresh 1% BSA as follows, depending on the number of samples being processed.

1% BSA			
Number of Samples	1	48	96
Nuclease-free water	1.82 mL	87.3 mL	174.4 mL
Gibco Bovine Albumin Fraction V (7.5% solution)	280 μ L	13.6 mL	27.2 mL
Total Volume	2.1 mL	100.8 mL	201.6 mL

2. Fill a new basin with 1% BSA, refilling as needed in step 3.
3. For each sample, add **1 mL** of 1% BSA to a well of a polypropylene, nuclease-free, v-bottom, 1 mL deep well plate, or **2 mL** per well for a 2 mL deep well plate.
4. Repeat step 3 with a second deep well plate.
5. Add new plate seals and invert once to fully coat the wells.
6. Incubate for **30 minutes** at room temperature.
7. Remove the plate seals. Decant and discard the 1% BSA.
8. Add new plate seals.
9. Centrifuge the plates for **1 minute** at 100 x g at room temperature.
10. Remove the plates from the centrifuge and remove the plate seals.
11. Remove any remaining solution from the bottom of the wells with a multichannel P200.

12. Without sealing the plates, air dry for **30 minutes** in a biosafety cabinet at room temperature.
13. Proceed to Section 1.2 or store sealed BSA-coated plates at 4°C for up to 4 weeks.

1.2. Prepare Master Mixes

Master mixes should be prepared just prior to fixation. Plate Strainers are cut, if needed.

To prepare master mixes:

1. Fill a bucket with ice. Gather the following items and handle as indicated below.



Note: The reagents listed below refer to the Evercode Cell Fixation 12 Reactions Kit (boxes NF500 and NF600). For runs with more than 48 samples, use the Evercode Cell Fixation 96 Reactions Kit (boxes NF700 and NF800).

ITEM	SOURCE	FORMAT	HANDLING AND STORAGE
○ Prefixation Buffer	Nuclei Fixation Reagents (-20°C)	15 mL bottle	Thaw at room temperature then immediately store on ice. Mix by inverting each tube/bottle. Do not vortex.
○ Storage Buffer	Nuclei Fixation Reagents (-20°C)	8 mL bottle	
○ Fixative Solution	Nuclei Fixation Reagents (-20°C)	8 mL bottle	
● Permeabilization Solution	Nuclei Fixation Reagents (-20°C)	2 mL tube	
○ Fix and Perm Stop Buffer	Nuclei Fixation Reagents (-20°C)	15 mL bottle	
● DMSO	Nuclei Fixation Reagents (-20°C)	1.5 mL tube	Thaw and store at room temperature. Mix by inverting the tube.
● RNase Inhibitor	Nuclei Fixation Reagents (-20°C)	1.5 mL tube	Store on ice immediately before use. Do not vortex.
● Prefixation Enhancer	Nuclei Prefixation Enhancer (4°C)	2 mL tube	
Plate Strainer (30 μm)	Plate Strainer (Room Temperature)	Plastic sleeve	Keep at room temperature

2. Prepare the Nuclei Prefixation Master Mix in a new tube as follows. Mix thoroughly by pipetting and store on ice.

NUCLEI PREFIXATION MASTER MIX			
Number of Samples	1	48	96
○ Prefixation Buffer	222 μ L	10.7 mL	21.3 mL
● RNase Inhibitor	3 μ L	144 μ L	288 μ L
● Prefixation Enhancer	15 μ L	720 μ L	1.4 mL
Total Volume	240 μ L	11.2 mL	23 mL



CRITICAL! The overages in these master mixes are designed for use with the Evercode™ Nuclei Fixation v4, HT 96 reactions kit when processing ≥ 48 samples across up to 2 fixation sessions. If the kit is to be used more than twice, the mid-throughput plate-based workflow should be used instead to ensure there are sufficient reagent overages.

CRITICAL! Reagents in the Nuclei Fixation JP Reagents box can be frozen and thawed 3 times. If the kit will be used more than 4 times, aliquots should be made. See Reagent Stability in Important Guidelines for details.

3. Prepare the Nuclei Storage Master Mix in a new tube as follows. Mix thoroughly by pipetting and store on ice.

NUCLEI STORAGE MASTER MIX			
Number of Samples	1	48	96
○ Storage Buffer	131.25 μ L	6.3 mL	12.6 mL
● RNase Inhibitor	1.75 μ L	84 μ L	168 μ L
● DMSO	7 μ L	336 μ L	672 μ L
Total Volume	140 μ L	6.72 mL	13.44 mL

4. Each sample is strained twice into 2 different plates in Section 2, so Plate Strainer(s) may need to be cut so they can be applied separately in the two steps with 1 strainer well per sample at both steps. With the Plate Strainers still in the plastic sleeve, cut along the green plastic with sterile scissors, a razor blade, or a scalpel that has been cleaned with RNaseZap.



CRITICAL! Do not directly touch the mesh of Plate Strainer(s) to anything prior to straining.

CRITICAL! After opening their plastic sleeves, Plate Strainers should be stored in their original plastic sleeve until use and used on the same day they were opened.

5. Proceed immediately to Section 2.

Section 2: Fixation

2.1. Nuclei Fixation

After the initial centrifugation to remove the buffer/medium from the single nuclei suspension, nuclei are transferred to Nuclei Prefix Master Mix. Reagents are added to fix and permeabilize nuclei, and then stop these reactions. Nuclei are resuspended in Nuclei Storage Master Mix and stored at -80°C . This fixation protocol relies on multichannel pipettes and the reagents pre-dispensed in 0.2 mL tube strips or plates in Section 1 to fix up to 48 samples in parallel.

To fix nuclei:

1. Cool the centrifuge with a swinging bucket rotor to 4°C .
2. Fill a bucket with ice.
3. Prepare a hemocytometer, flow cytometer, or other nuclei counting device.
4. Count the nuclei in the single nuclei suspension with a hemocytometer or alternative counting device and record the count. Keep nuclei on ice during counting and work quickly to minimize time on ice prior to fixation.
5. With the plate on ice, transfer 100,000 to 1 million nuclei from each sample into the wells of polypropylene, nuclease-free, v-bottom, 1 mL or 2 mL deep well plate (or BSA-coated deep well plate if prepared in Section 1.1).
6. Add a new plate seal.
7. Centrifuge the plate in a swinging bucket rotor for **5-10 minutes** at 200-500 x g at 4°C .

CRITICAL! Use of a fixed-angle rotor in this protocol will lead to substantial nuclei loss.



CRITICAL! Ideal centrifugation speed and duration should be determined for each sample type to optimize retention and resuspension efficiencies. See the Important Guidelines section for details.

CRITICAL! Move quickly and handle the samples gently to avoid dislodging the pellet, which will impact data quality.

8. Remove the plate from the centrifuge, remove the plate seal, and store on ice.

9. With a multichannel P200, slowly aspirate and discard all but ~100 μL of supernatant from each well. Keep the pipette tips along the side of the wells to avoid disturbing the pellets.



CRITICAL! Do not reuse any tips across rows throughout this protocol. Never place a tip that has entered one of the wells into a different well or back into a master mix.

10. Tilt the plate 90 degrees. With a multichannel P200, remove and discard the remaining supernatant. Keep the pipette tips along the side of the wells to avoid disturbing the pellets.



CRITICAL! Less than 20 μL of supernatant should be left in each well. See the Important Guidelines section for an example image with varying amounts of residual supernatant.



Note: Tilting the plate 90 degrees makes it easier to visualize removal of residual supernatant.

11. Transfer the Nuclei Prefixation Master Mix to a new basin with a pipette.
12. With the plate on ice, fully resuspend each pellet in **180 μL** of Nuclei Prefixation Master Mix.
13. Apply a Plate Strainer to a new 96 deep well plate (or BSA-coated deep well plate if prepared in Section 1.1) by peeling off the backing, carefully aligning over the wells, and placing on the surface of the plate.



CRITICAL! Do not directly touch the mesh of Plate Strainer(s) to anything prior to straining.



Note: Plate Strainer(s) will need to be cut if processing fewer than 96 samples. See Step 4 in Section 1.2 for details.

14. Without touching the mesh, fully adhere the Plate Strainer by pressing a pipette tip or plate sealer cleaned with RNaseZap along the green plastic on the edges and between the wells of the plate.
15. With both plates on ice, pipette **187.5 μL** of each sample through the strainer into the new 96 deep well plate. Discard the original plate.



Note: To ensure that all of the liquid passes through the strainer, firmly press the tip of the pipette against the filter and steadily depress down the pipette plunger. All of the liquid should pass through the strainer in ~1 second.

16. Tap the plate 3x on the benchtop to move liquid to the bottom of the wells.

17. Carefully peel off the Plate Strainer and discard.

18. Transfer **○** Fixative Solution to a new basin with a pipette as follows.

FIXATIVE SOLUTION			
Number of Samples	1	48	96
○ Fixative Solution	100 μ L	4.8 mL	9.6 mL

19. With the plate on ice, add **62.5 μ L** of **○** Fixative Solution to each well and mix immediately by pipetting exactly 3x.



CRITICAL! Do not perform additional mixing at this step.

20. Incubate on ice for **10 minutes**.



Note: Start the timer after adding **○** Fixative Solution to the first row of the plate.

21. Add **●** Permeabilization Solution to a new basin with a pipette as follows.

PERMEABILIZATION SOLUTION			
Number of Samples	1	48	96
● Permeabilization Solution	37.5 μ L	1.8 mL	3.6 mL

22. With the plate on ice, add **20 μ L** of **●** Permeabilization Solution to each well with a multichannel P20 and mix immediately by pipetting 3x with a multichannel P200 set to 180 μ L.

23. Incubate on ice for **3 minutes**.



Note: Start the timer after adding ● Permeabilization Solution to the first row of the plate. This incubation can be extended by 2 additional minutes (up to a total of 5 minutes) without negatively impacting performance.

24. Add ○ Fix and Perm Stop Buffer to a new basin with a pipette as follows.

FIX AND PERM STOP BUFFER			
Number of Samples	1	48	96
○ Fix and Perm Stop Buffer	283.3 μ L	13.6 mL	27.2 mL

25. With the plate on ice and changing tips between additions, add **250 μ L** of ○ Fix and Perm Stop Buffer to each well with a multichannel P200 set to 125 μ L. Mix immediately by gently pipetting 3x.

26. Add a new plate seal.

27. Centrifuge the plate in a swinging bucket rotor for **5-10 minutes** at 200-500 x g at 4°C.

28. Remove the plate from the centrifuge, remove the plate seal, and store on ice.

29. With a multichannel P200 set to 200 μ L, slowly aspirate and discard 400 μ L of supernatant from each well. Keep the pipette tips along the side of the wells to avoid disturbing the pellets.

30. Tilt the plate 90 degrees. With a multichannel P200, remove and discard the remaining supernatant from each well. Keep the pipette tips along the side of the wells to avoid disturbing the pellets.



CRITICAL! Less than 20 μ L of supernatant should be left in each well. See the Important Guidelines section for example images of varying volumes of residual supernatant.



Note: Tilting the plate 90 degrees makes it easier to visualize removal of residual supernatant.

31. Transfer the Nuclei Storage Master Mix to a basin with a pipette.

32. With the plate on ice, fully resuspend each pellet in **75 μ L** of Nuclei Storage Master Mix.

33. Apply a Plate Strainer to a new 0.2 mL 96 well PCR plate by peeling off the backing, carefully aligning over the wells, and placing on the surface of the plate.



CRITICAL! Do not directly touch the mesh of Plate Strainer(s) to anything prior to straining.

34. Without touching the mesh, fully adhere the Plate Strainer by pressing a pipet tip or plate sealer cleaned with RNaseZap along the green plastic on the edges and between the wells of the plate.

35. With both plates on ice, pipette **85 μ L** of each sample through the strainer into the new PCR plate. Discard the original plate.

36. Carefully peel off the Plate Strainer and discard.

37. With a multichannel P20 set to 20 μ L, mix the samples by pipetting 5x then immediately transfer **20 μ L** to new 0.2 mL tube strip(s). Store on ice.



Note: These aliquots can be thawed and counted separately from the remaining sample for downstream processing with Evercode kits.

38. Seal the original plate with a seal that can withstand storage at -80°C or transfer the remainder of the sample to 0.2 mL tube strip(s).



CRITICAL! Many clear plastic seals are not designed for storage at -80°C , so we recommend using foil plate seals if storing fixed samples in PCR plates.

39. Place the samples in a room temperature styrofoam cooler, close the lid, and store at -80°C to slowly cool the samples.



CRITICAL! Storing samples directly in the freezer without controlled cooling may lead to nuclei damage and compromise data quality.



Safe stopping point: Samples are stable for up to 6 months at -80°C .

40. The day before running the downstream Evercode kit, thaw the 20 μ L aliquots in a water bath set to 37°C in sets of 2-4. Count the nuclei in the single nuclei suspension with a hemocytometer or alternative counting device and record the count. Discard any remaining sample from the counting step.



Note: These counts will more accurately reflect counts when collected closer to downstream Evercode processing because they have undergone a similar storage time and the freeze thaw. These counts can be used to calculate any necessary dilutions with the Sample Loading Table for the relevant Evercode kit.

Appendix: Revision History

Version	Description	Date
1.0	Initial release	February 2026



parsebiosciences.com

support@parsebiosciences.com

