

User Manual

Version 1.7 - UMIB1500



Evercode™ BCR Mega

For use with
ECIB1500 (Human)
ECIB1510 (Mouse)
ECIB1520 (Transgenic
Mouse)



Support Suite

Legal Notices

This document and its contents are proprietary to Parse Biosciences, Inc. ("Parse Biosciences") and are intended solely for use by its customers in connection with the use of the product(s) described herein and for no other purpose. The products may be used solely FOR RESEARCH PURPOSES, AND MAY NOT BE USED IN ANY DIAGNOSTIC OR THERAPEUTIC USE IN HUMANS OR ANIMALS. This document and its contents shall not be used or distributed for any other purpose and/ or otherwise communicated, disclosed or reproduced in any way whatsoever without the prior written consent of Parse Biosciences.

No rights are granted under this document with respect to any of Parse Biosciences' intellectual property rights. The license to use of any products described herein is subject to a separate written agreement between Parse Biosciences and the applicable user.

The instructions in this document must be strictly and explicitly followed by qualified and properly trained personnel in order to ensure the proper and safe use of the product(s) described herein. Parse Biosciences shall have no liability for any direct, indirect, consequential or incidental damages arising out of any failure to use the product(s) in strict compliance with the terms herein.

This document may contain references to third-party sources of information, hardware or software, products, or services and/ or third-party web sites (collectively "Third Party Information"). Parse Biosciences does not control, and is not responsible for, any Third Party Information. The inclusion of Third Party Information in this document does not imply endorsement by Parse Biosciences of the Third Party Information or the third party in any way.

The product(s) described in this document are provided for one-time use by the purchaser and may not be re-used, refurbished or resold. In addition, such product(s) may not be altered, changed or modified by anyone other than Parse Biosciences and its authorized agents, and Parse Biosciences will not be liable for any such alterations, changes or modifications. The product(s) described herein may be covered by one or more of the following patents:

U.S. Pat. No. 10,900,065

U.S. Pat. No. 11,168,355

U.S. Pat. No. 11,427,856

U.S. Pat. No. 11,634,751

U.S. Pat. No. 11,639,519

U.S. Pat. No. 11,680,283

Patents pending in the U.S. and other countries

PARSE and EVERCODE are trademarks of Parse Biosciences, Inc. The information made available herein is the sole property of Parse Biosciences and its licensors.

Copyright (c) 2024-2025 Parse Biosciences, Inc. All Rights Reserved.

Table of Contents

Overview	5
Workflow	5
Protocol Timing.....	10
Important Guidelines	12
Part List	18
User Supplied Equipment and Consumables	23
Section 1: In situ Cell Barcoding	26
1.1. Set up and Sample Counting	26
1.2. Barcoding Round 1	28
1.3. Barcoding Round 2	31
1.4. Barcoding Round 3	35
1.5. Lysis and Sublibrary Generation.....	38
Section 2: cDNA Capture and Amplification.....	41
2.1. cDNA Capture.....	41
2.2. cDNA Template Switch	44
2.3. cDNA Amplification.....	46
2.4. Post-Amplification Purification	49
2.5. cDNA Quantification	50
Section 3: Sequencing Library Preparation.....	52
3.1 Fragmentation and End Prep.....	52
3.2. Post-Fragmentation and End Prep Size Selection	54

3.3. Adapter Ligation.....	55
3.4. Post-Ligation Purification	57
3.5. Barcoding Round 4	58
3.6. Post-Round 4 Barcoding Size Selection	60
3.7. Sequencing Library Quantification.....	61
Section 4: BCR Library Preparation	63
4.1. Pool Libraries	63
4.2. Blocking & Hybridization	65
Section 5: BCR Amplification	68
5.1. Bind and Wash	68
5.2. BCR Amplification.....	71
5.3. BCR Library Quantification	73
Appendices	75
Appendix A: Sublibrary Generation Table	75
Appendix B: Sequencing Information	76
Appendix C: Thermocycling Programs	79
Appendix D: Vacuum Concentration	85
Appendix E: Revision History	85

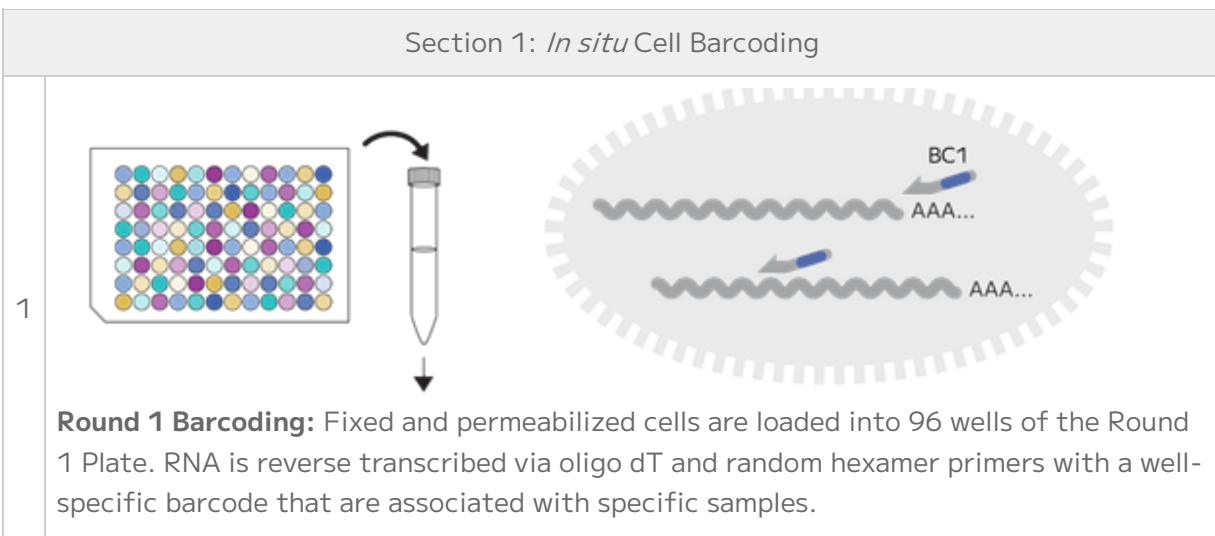
Overview

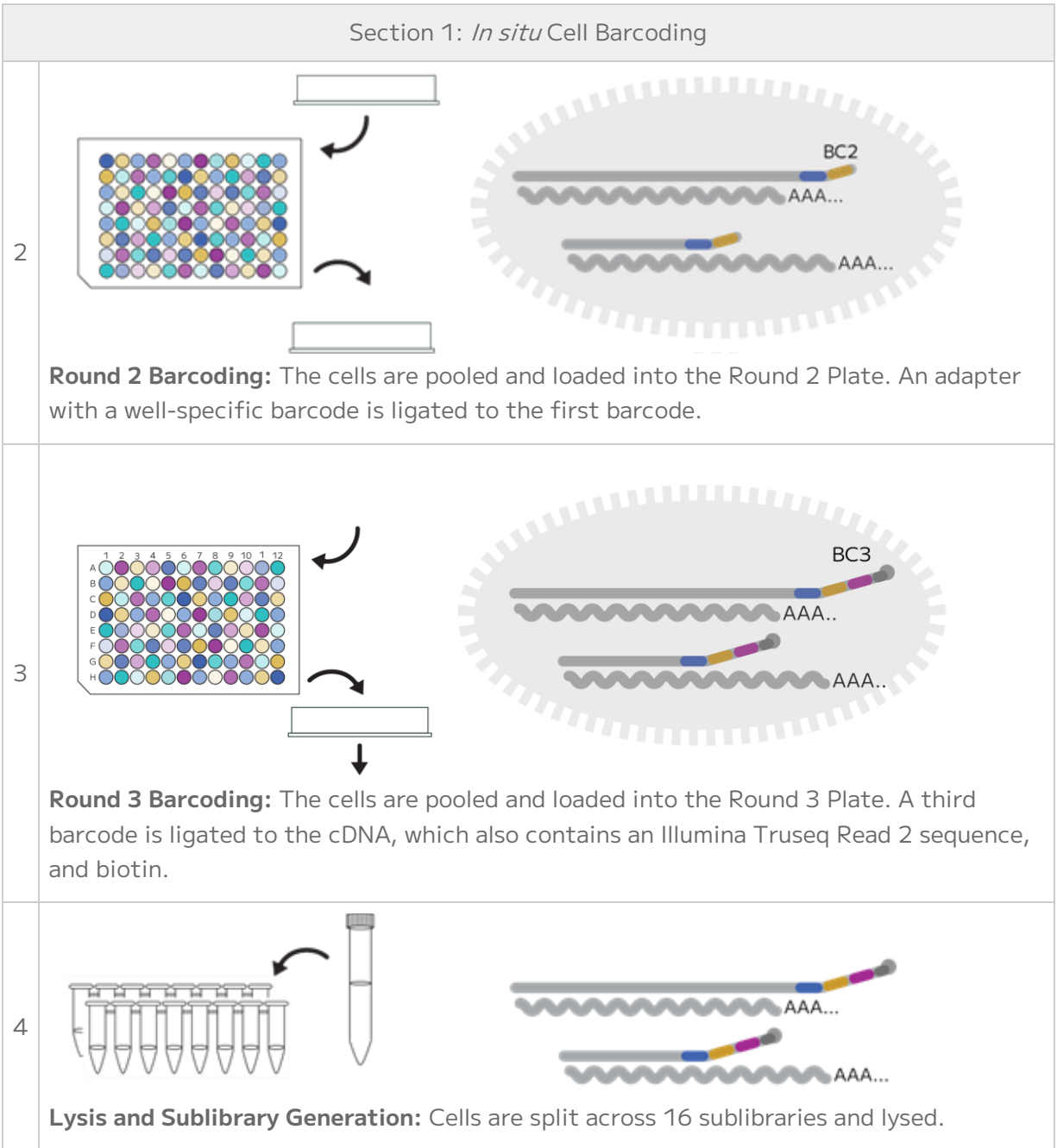
Workflow

Evercode split-pool combinatorial barcoding brings a simple workflow to large-scale single cell RNA-seq experiments. The Evercode BCR Mega kit can profile up to 1,000,000 cells across up to 96 different biological samples or experimental conditions. Evercode Fixation kits fix and permeabilize cells so they act as individual reaction compartments. This eliminates the need for dedicated microfluidics instrumentation. Through four rounds of barcoding, the transcriptome of each fixed cell is uniquely labeled. The four rounds of barcoding can yield a vast number of possible barcode combinations, which is more than sufficient to uniquely label up to 1,000,000 cells while avoiding doublets. After sequencing, the Parse Biosciences Analysis Pipeline assigns reads that share the same four barcode combinations to a single cell.

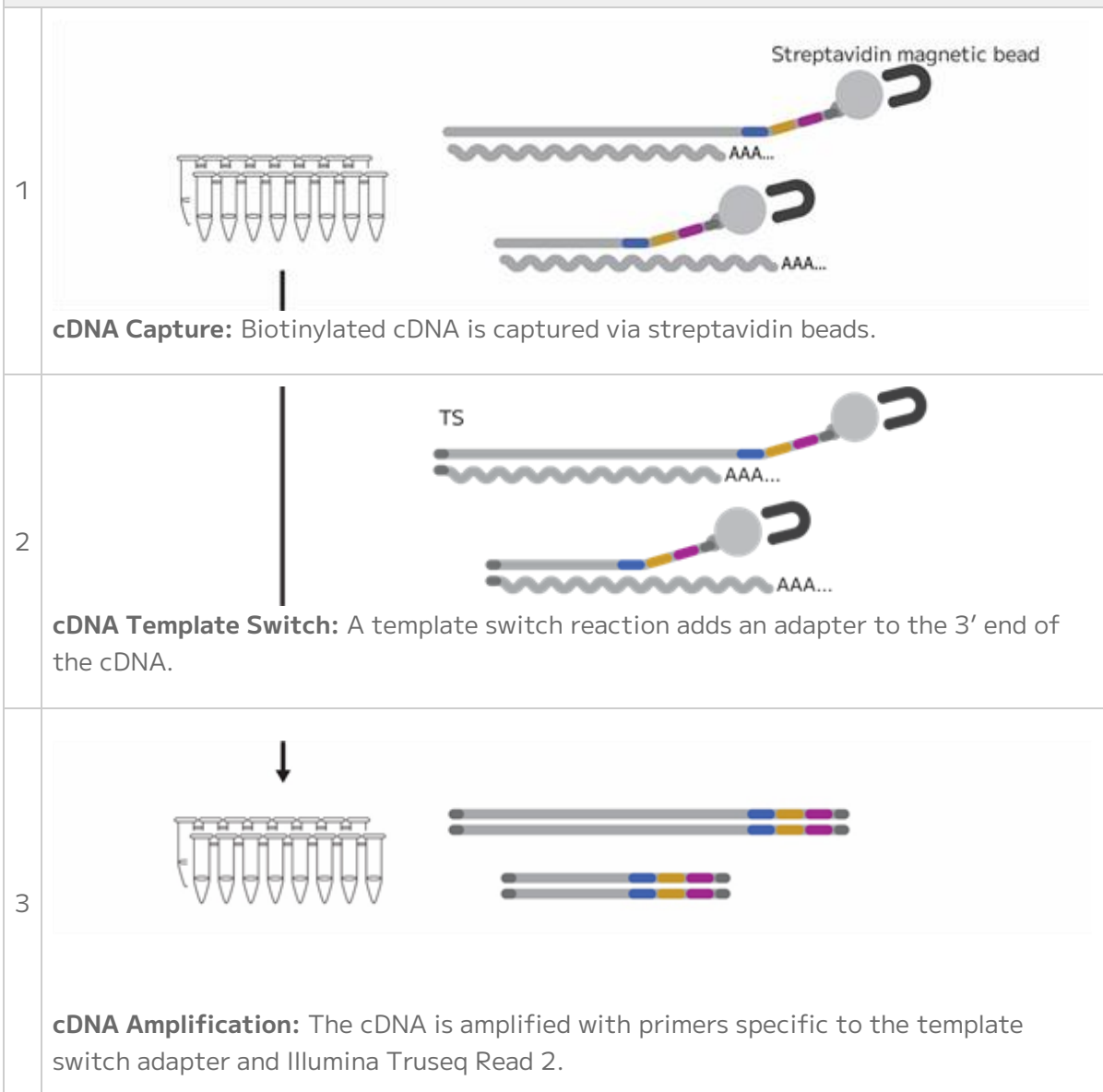
The Evercode BCR and Whole Transcriptome kit is a hybridization-based technology that captures B cells' full length V(D)J sequences.

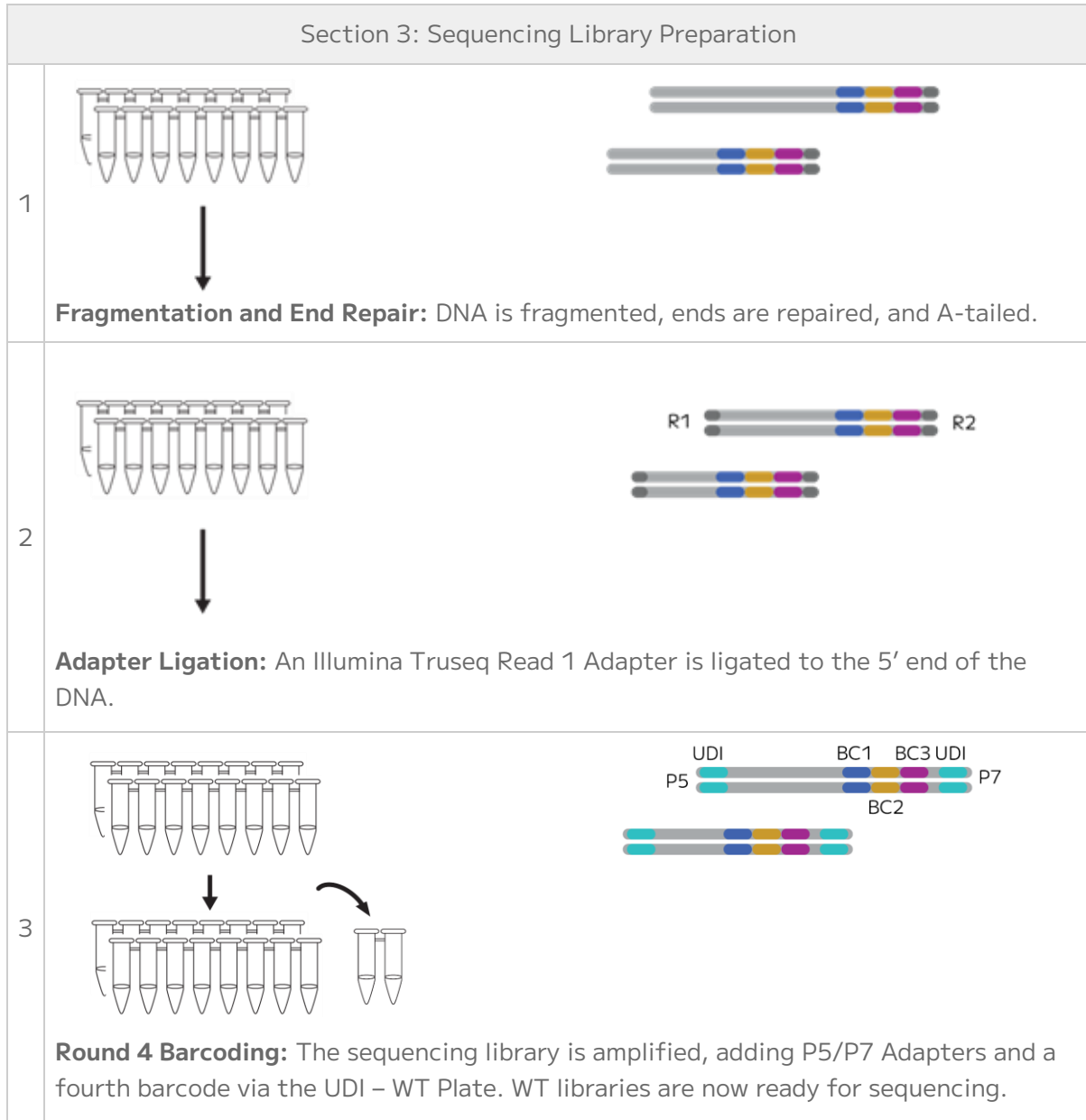
The tables below provide a high-level overview of the workflow.

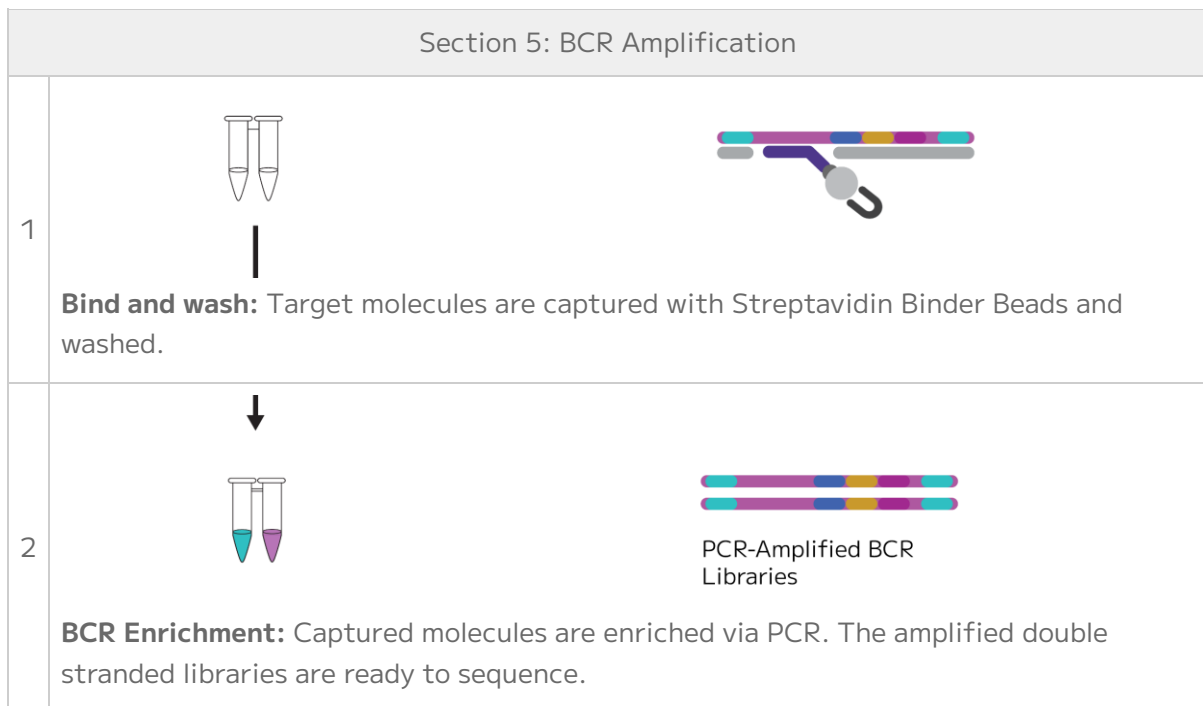
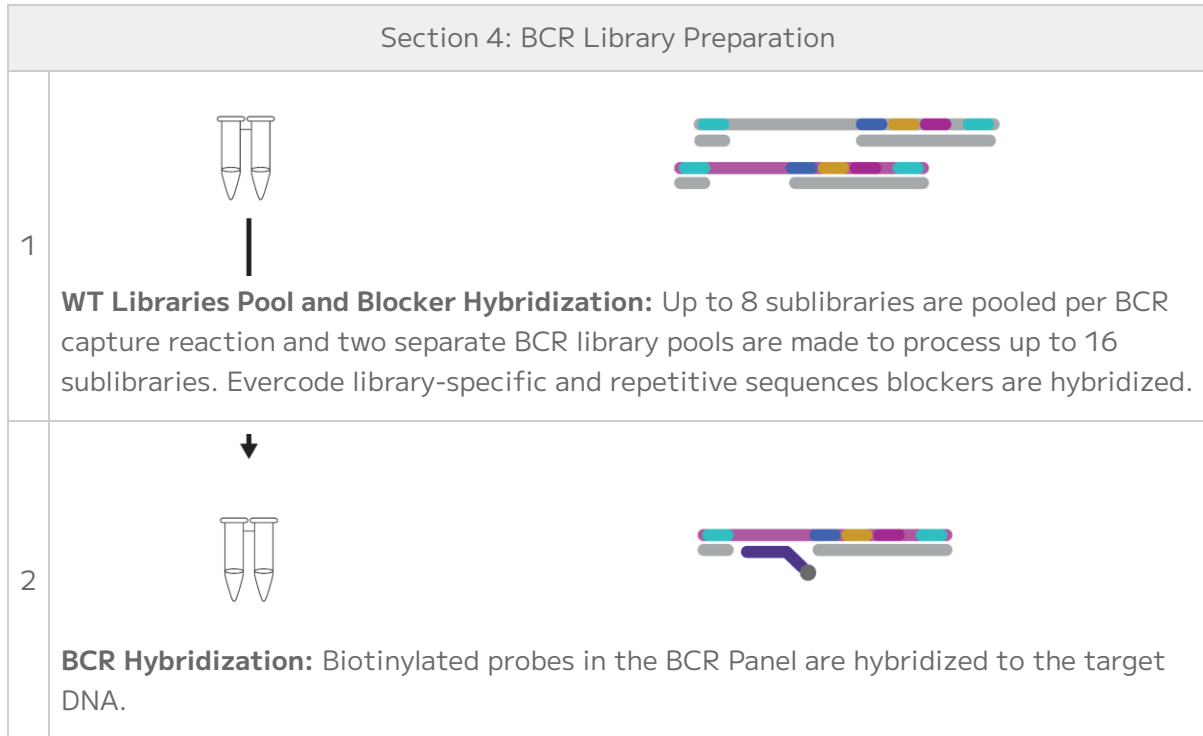




Section 2: cDNA Capture and Amplification





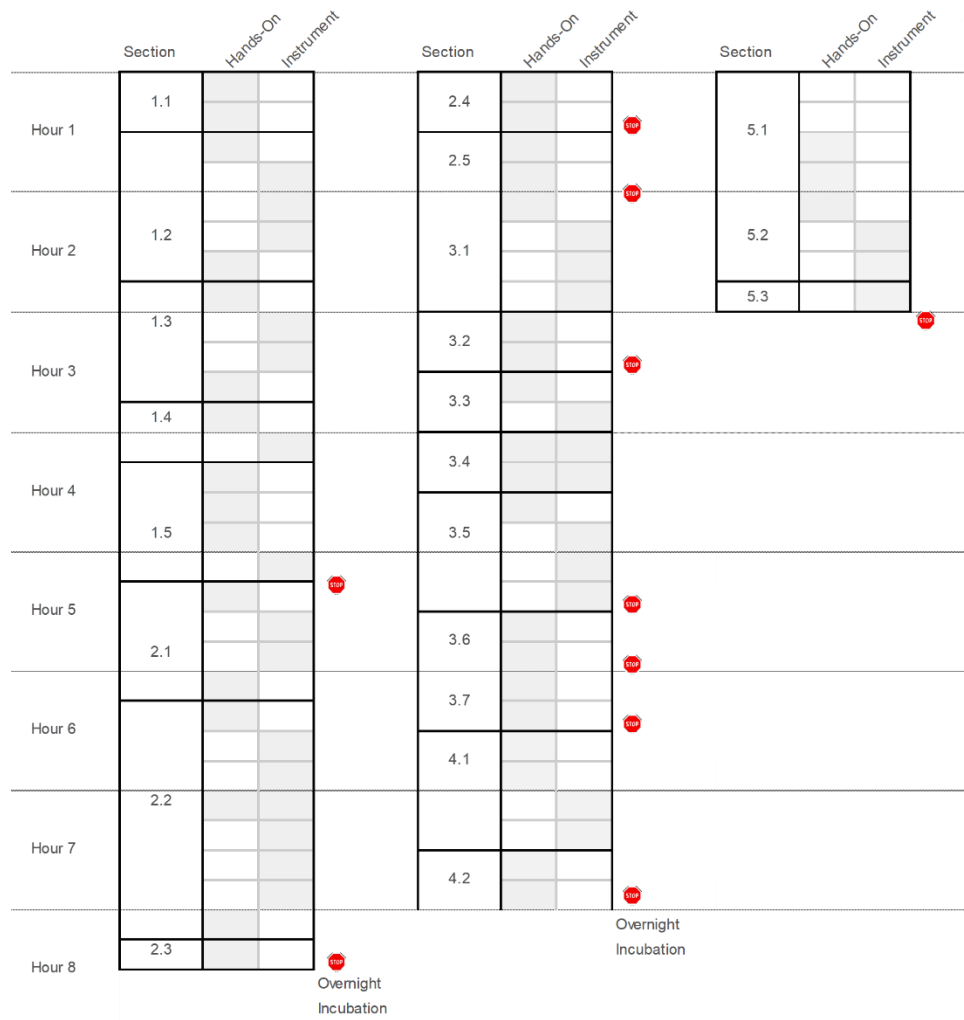


Protocol Timing

The table below provides details of the total and hands-on time required for the whole transcriptome and BCR workflow. A visual representation of the workflow is shown below the table.

DESCRIPTION	TIME	HANDS-ON-TIME	SAFE STOPPING POINTS
Section 1: In Situ Cell Barcoding			
1.1 Set up and Sample Counting	Variable (30-90 min)	Variable (30-90 min)	
1.2 Barcoding Round 1	75 min	45 min	
1.3 Barcoding Round 2	60 min	45 min	
1.4 Barcoding Round 3	30 min	15 min	
1.5 Lysis and Sublibrary Generation	60 min	45 min	-80°C ≤ 6 months
Section 2: cDNA Capture and Amplification			
2.1 cDNA Capture	60 min	30 min	
2.2 cDNA Template Switch	120 min	30 min	4°C ≤ 18 hrs
2.3 cDNA Amplification	90 min	15 min	4°C ≤ 18 hrs in the thermocycler
2.4 Post-Amplification Purification	30 min	30 min	
2.5 cDNA Quantification	30 min	30 min	4°C ≤ 48 hrs or -20°C ≤ 3 months
Section 3: Sequencing Library Preparation			
3.1 Fragmentation and End Prep	60 min	30 min	
3.2 Fragmentation and End Prep Size Selection	30 min	30 min	4°C ≤ 18 hrs or -20°C ≤ 2 weeks
3.3 Adapter Ligation	30 min	15 min	
3.4 Post-Ligation Purification.	30 min	30 min	
3.5 Barcoding Round 4	45 min	15 min	4°C ≤ 18 hrs in the thermocycler

DESCRIPTION	TIME	HANDS-ON-TIME	SAFE STOPPING POINTS
3.6 Post-Barcoding Round 4 Size Selection	30 min	30 min	
3.7 Sequencing Library Quantification	30 min	30 min	-20°C ≤ 3 months
Section 4: BCR Library Preparation			
4.1 Pool Libraries	60 min	30 min	
4.2 Hybridization	15-17 hrs	30 min	
Section 5: BCR Amplification			
5.1 Bind and Wash	60 min	30 min	
5.2 BCR Amplification	40 min	10 min	
5.3 BCR Library Quantification	20 min	10 min	-20°C ≤ 3 months



Important Guidelines

The following guidelines provide additional information to obtain optimal performance. For additional questions not discussed below, please contact us at support@parsebiosciences.com. We also have a library of additional resources and videos on our support site at <https://support.parsebiosciences.com/>.

Sample Input

- When working with mouse B cells, use the Evercode Mouse TCR/BCR Cell Fixation workflow, which includes a murine RNase Inhibitor.
- Even if samples were counted before freezing, we strongly recommend counting cells again after thawing to account for any changes during storage and freeze thaw. Typically, a 5-15% decrease after thawing should be expected. These counts are used to determine how cells are loaded in the Round 1 Plate, and their accuracy is critical to recover the desired number of cells.
- When processing many fixed samples, we recommend aliquoting samples after fixation and counting the aliquots the day before using an Evercode BCR kit. The Evercode Fixation User Manuals outline recommendations for generating aliquots. Because aliquots have undergone a similar storage time and a freeze thaw, cell counts from these aliquots will be more representative than using counts from immediately after fixation. Aliquots should be thawed in a water bath set to 37°C in sets of 2-4 and counted with a hemocytometer or alternative counting device. Counts should be recorded in the Sample Loading table, and any remaining sample material from the counting aliquot should be discarded.
- Once fixed samples have been thawed, they should not be refrozen.

Cell Counting and Quality Assessment

- We recommend a hemocytometer for counting, but alternative counting devices can also be used. If possible, validate counts from alternative devices to a hemocytometer when using Evercode kits for the first time.
- When first using Evercode kits, we suggest saving images at each counting step.
- To assess sample quality, we recommend using viability stains like trypan blue or acridine orange and propidium iodide (AO/PI).
- After fixation, the cells are permeabilized and will appear dead with viability stains.

- Examples of trypan blue stained fixed cells are shown below. High quality fixed samples have single distinct cells with <5% cell aggregation and no debris. Higher levels of aggregation will lead to elevated doublets after sequencing. When quantifying fixed samples, it is critical to avoid counting cell debris to avoid overestimating the number of cells.

High Quality Sample



Aggregation



Debris

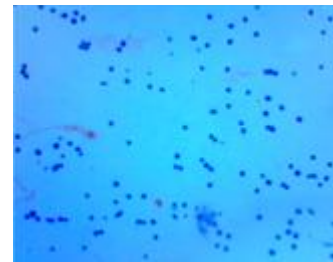


Figure 1: Example of trypan blue stained fixed cells.

Avoiding RNase Contamination

- Take standard precautions to avoid introducing RNases into samples or reagents throughout the workflow. Always wear proper laboratory gloves and use aseptic technique.
- Although RNases are not inactivated by ethanol or isopropanol, they are inactivated by products such as RNaseZap RNase Decontamination Solution (Thermo Fisher Scientific). These can be sprayed on benchtops and pipettes.
- Filtered pipette tips should be used to reduce RNase contamination from pipettes.

Centrifugation

- A range of centrifugation speeds and durations are provided in this protocol. Optimize centrifugation conditions for each sample type to balance retention and resuspension efficiencies.
- Use a swinging bucket rotor for all high-speed centrifugation steps in this protocol. A fixed-angle rotor will lead to substantial cell loss.

Optimizing Cell Recovery

- It is critical to thoroughly resuspend the cells after centrifugation throughout the protocol. Resuspend by slowly and repeatedly pipetting up and down until no clumps are visible. Due to cell adherence to tubes, carefully pipette up and down along the bottom and sides of tubes to minimize cell loss.

- We do not recommend wide bore pipette tips as they make it difficult to resuspend cell pellets adequately.
- Ensure that the 15 mL centrifuge tubes that will be used are polypropylene, as polystyrene tubes will lead to substantial sample loss.
- The first time using an Evercode kit, we recommend retaining supernatants after each barcoding step. In the unlikely event of unexpectedly high sample loss, these supernatants can be analyzed to identify points for optimization.

Sample Loading Table

- The Parse Biosciences Evercode WT Mega Sample Loading Table v2 (Excel spreadsheet) should be completed before starting the experiment.
- If the table isn't working as expected, ensure that Macros are enabled in the Sample Loading Table. Be sure to only edit the colored cells in the table to avoid disturbing any calculations.
- In the unlikely event that samples are not concentrated enough according to the Sample Loading Table (Excel spreadsheet), choose to either:
 - Decrease the "Max number barcoded cells" until the Sample Loading Table no longer gives an error, which will maintain the desired proportion between samples but barcode fewer cells.
 - Add 14 μ L of undiluted sample into each designated well of the Round 1 Plate, which will result in more overall barcoded cells but change the desired proportion between samples.

Cell Strainers

- A cell strainer with an appropriately sized mesh should be used throughout the protocol. Although 30-40 μ m is appropriate for many cell types, the mesh size should be chosen based on the sample type.
- To maximize cell retention with cell strainers, press the pipette tip directly against the mesh. Ensure ample pressure is applied to hold contact between the tip and the strainer to force liquid through in ~1 second. An example video can be found on our support site.

Vortexing

- Unless specified in an individual step, we strongly discourage vortexing samples or enzymes throughout the protocol.

Plate Sealing

- While sealing or unsealing 96 well plates, do not splash liquid onto the PCR plate seal or between wells. Securing plates in the provided PCR tube racks will minimize this occurrence. PCR plate seals may be difficult to remove. Carefully peel the PCR plate seal while applying downward pressure on the plate to keep it in the PCR tube rack.

Magnetic Racks and Bead Cleanups

- The Parse Biosciences Magnetic Rack (Parse Biosciences) uses powerful rare earth magnets for rapid and efficient magnetic bead purifications for 0.2 mL tubes. The rack has high and low magnet positions important for optimal yield at key steps. We do not recommend substituting alternative racks
- To alternate between the positions, the rack can be flipped upside down so the magnet is closer to the top (high) or bottom (low) of the 0.2 mL tubes. See the figure below for clarification.

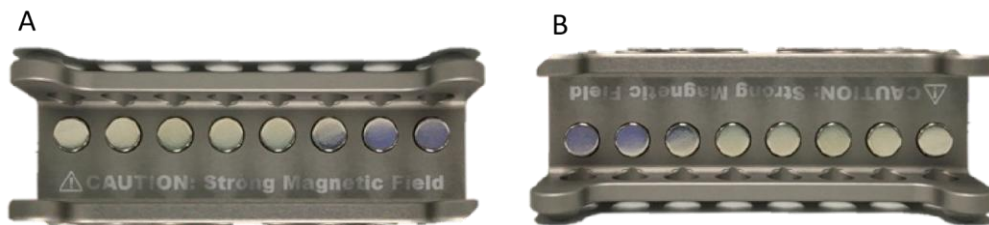


Figure 2: Parse Biosciences Magnetic Rack at (A) high and (B) low magnet positions.

- To ensure material is not lost during bead purifications, ensure supernatants are completely clear before moving to the next step. The incubation times at each step are recommendations, but visual confirmation of clearing should be used to make the final determination. See the figure below for an example of completely cleared supernatants. Discarding any beads in supernatants will result in a reduction of transcripts and genes detected per cell.



Figure 3: Clear supernatant with compact bead pellets.

Sublibrary Loading

- The Evercode BCR Mega kit generates 16 sublibraries with distinct Illumina indexing barcodes, which can be processed and sequenced independently or concurrently after Section 1 of the protocol.
- The number of cells per sublibrary is determined when the cells are divided into sublibraries in Section 1.5 according to the guidelines in Appendix A.
- When working with a new sample type, it can be beneficial to process a single sublibrary to optimize PCR conditions before running the remaining sublibraries.
- Sublibraries can be loaded with different numbers of cells, and the maximum number of cells that can be analyzed is the sum of cells across all sublibraries.
- Asymmetric sublibrary loading can enable cost-effective sequencing quality control. One sublibrary can be loaded with a few hundred cells and sequenced very deeply. This data can be used to choose an appropriate sequence depth for the remaining sublibraries.

Sublibrary Concentration

- When pooling sublibraries in Section 4.1, vacuum concentration can be used rather than SPRI bead concentration. See Appendix D for a protocol.

Indexing Primers

- The UDI Plate - WT is a 96-well plate containing 48 unique dual indexing (UDI) primers. Each well is a single-use reaction sufficient for one Barcoding Round 4 PCR reaction for a single sublibrary. Thus, the UDI Plate - WT can be used for multiple Evercode kits.
- The UDI Plate - WT is sealed with a pierceable foil to minimize cross-contamination. The plate seal should be wiped with 70% ethanol and pierced with a new pipette tip immediately prior to use. Avoid splashing or mixing the liquid between individual wells. Once a well has been used, it should not be resealed or reused.
- We recommend selecting UDIs column-wise from left to right (starting with indices 1-8). UDI sequences can be found in Appendix B.

BCR Library Generation

- The BCR library generation protocol begins with indexed sublibraries obtained with Evercode BCR kit. For each library pool, up to 8 indexed sublibraries can be used for BCR library preparation. If processing more than 8 sublibraries, then two BCR library pools should be prepared. Pooling sublibraries require at least a concentration of 5 ng/ μ L per

sublibrary. We recommend adding a minimum of 100 ng of each sublibrary to the BCR library pool for a maximum of 800 ng of total input per reaction.

- For 16 sublibraries two BCR library pools will be generated.
- To ensure even sequencing coverage, sublibraries with similar cell numbers should be mixed in equal proportion. However, if any sublibraries have less than 100 ng of input, 50 ng of each sublibrary can be pooled in equal proportion to a total of 400 ng. Adjust the number of PCR cycles based on the indexed sublibraries input amount to ensure optimal amplification.

Sublibraries Concentration

- SPRI beads are used to concentrate libraries during Section 4.1 of the Evercode BCR workflow and will remain in the solution through subsequent steps. These beads are not removed immediately but will be removed during the post-PCR library cleanup in Section 5.2. In Section 5.1, streptavidin beads are introduced to capture target molecules. As a result, during Section 5 both SPRI and streptavidin beads will be present in the sample.



Thermocycling Programs









- We recommend pre-programming the thermocycling programs required for the entire workflow. A summary of these can be found in Appendix C.





Part List

The Evercode BCR kit includes the following boxes. Safety Data Sheets for these reagents can be provided upon request.

WT -20°C Reagents Store -20°C, PN HBG100 or MBG100

LABEL	ITEM	PN	FORMAT	QTY
	Round 1 Plate	HBG101 or MBG101	Green semi-skirted 96 well plate	1
	Round 2 Plate	MG102	Blue semi-skirted 96 well plate	1
	Round 3 Plate	MG103	Yellow semi-skirted 96 well plate	1
	Resuspension Buffer	MG104	5 mL tube	1
	Sample Dilution Buffer	MG105	2 mL tube	1
	Round 2 Ligation Buffer	MG106	5 mL tube	1
	Round 2 Ligation Enzyme	MG107	1.5 mL tube	1
	Round 2 Stop Buffer	MG108	2 mL tube	1
	Round 3 Stop Buffer	MG109	5 mL tube	1
	Pre-Lysis Wash Buffer	MG110	5 mL tube	1

LABEL	ITEM	PN	FORMAT	QTY
	Round 3 Ligation Enzyme	MG111	1.5 mL tube	1
	Pre-Lysis Dilution Buffer	MG112	2 mL tube	1
	Lysis Enzyme	MG113	1.5 mL tube	1
	Bead Wash Buffer	MG114	5 mL tube	1
	Wash Buffer 1	MG115	5 mL tube	1
	Wash Buffer 2	MG116	5 mL tube	1
	Capture Enhancer	MG117	1.5 mL tube	1
	Binding Buffer	MG118	1.5 mL tube	1
	Wash Buffer 3	MG119	5 mL tube	1
	Template Switch Buffer	MG120	2 mL tube	1
	Template Switch Enzyme	MG121	1.5 mL tube	1
	Template Switch Primer	MG122	1.5 mL tube	1
	cDNA Amp Mix	MG123	1.5 mL tube	1
	cDNA Amp Primers	MG124	1.5 mL tube	1

LABEL	ITEM	PN	FORMAT	QTY
	Fragm/End Prep Buffer	MG125	1.5.mL tube	1
	Fragm/End Prep Enzymes	MG126	1.5 mL tube	1
	Ligation Adapter	MG127	1.5 mL tube	1
	Adapter Ligation Buffer	MG128	1.5 mL tube	1
	Adapter Ligation Enzyme	MG129	1.5 mL tube	1
	Library Amp Mix	MG130	1.5 mL tube	1

WT + BCR 4°C Reagents. Store 4°C, PN HBG200 or MBG200

LABEL	ITEM	PN	FORMAT	QTY
	Spin Additive	MG201	1.5 mL tube	1
	Lysis Buffer	MG202	1.5 mL tube	1
	Streptavidin Beads	MG203	1.5 mL tube	1
	Bead Wash Buffer A	GC301	1.5 mL tube	1
	Bead Wash Buffer B	GC302	2 mL tube	1
	Streptavidin Binding Buffer	GC303	5 mL tube	1

LABEL	ITEM	PN	FORMAT	QTY
	Streptavidin Binder Beads	GC304	1.5 mL tube	1

BCR -20°C Reagents Store at -20°C, PN HBG400, MBG400, or MBG500

LABEL	ITEM	PN	FORMAT	QTY
	Hybridization Mix	GC101	1.5 mL tube	1
	Hybridization Enhancer	GC102	1.5 mL tube	1
	Blocker Solution	GC103	1.5 mL tube	1
	Evercode Blocker Solution	GC108	0.5 mL tube	1
 OR  OR 	Human BCR Panel or Mouse BCR Panel or Transgenic Mouse BCR Panel	GC109 or GC110 or GC111	0.5 mL tube	1
	Enrichment Primer Mix	GC105	1.5 mL tube	1
	Enrichment Amplification Mix	GC106	0.5 mL tube	1



Note: The Evercode BCR Mega kit ECIB1500 (Human) includes the following boxes: HBG100, HBG200, and HBG400.

The Evercode BCR Mega kit ECIB1510 (Mouse) includes the following boxes: MBG100, MBG200, and MBG400.

The Evercode BCR Mega kit ECIB1520 (Transgenic Mouse) includes the following boxes: MBG100, MBG200, and MBG500.

The Evercode BCR Mega kit requires the following box. Store at -20°C. UDI Plate - WT box will need to be separately purchased.

ITEM	SUPPLIER	PN	NOTES
UDI Plate - WT	Parse Biosciences	UDI1001	Each 96 well plate contains 48 unique single-use reactions sufficient for multiple Evercode kits (48 sublibraries). UDI Plate - WT can be purchased separately or bundled with Evercode kits.

User Supplied Equipment and Consumables

The following equipment and consumables are required to perform the protocol, but are not provided within the kit. Note that this list does not include standard laboratory equipment, such as freezers.

Equipment

ITEM	SUPPLIER	PN	NOTES
Parse Biosciences Magnetic Rack	Parse Biosciences	SB1004	We do not recommend alternative 0.2 mL PCR tube racks, as they may result in lower transcript and gene detection.
Centrifuge with Swinging Bucket Rotors	Various Suppliers	Varies	Compatible with 15 mL centrifuge tubes and 96 well plates and capable of reaching 4°C.
Microcentrifuge	Various Suppliers	Varies	Compatible with 1.5 mL and 0.2 mL tubes.
Water bath	Various Suppliers	Varies	Or equivalent thermomixer, heat block, or bead bath capable of holding temperature at 37°C.
Two heat blocks	Various Suppliers	Varies	Or equivalent water bath, bead bath, or thermomixer capable of holding temperatures from 48°C to 68°C and compatible with 1.5 mL, 2 mL, and 5 mL tubes.
Hemocytometer	Sigma-Aldrich®	Z359629	Or other cell counting device. We recommend validating alternatives relative to a hemocytometer.
PCR tube rack	Various Suppliers	Varies	Capable of holding semi-skirted 96 well PCR plates and a tight fitting lid.
Plate Seal Applicator	Various Suppliers	Varies	Capable of adhering plate sealing films to 96 well plates.
Single Channel Pipettes: P20, P200, P1000 12channel: P20, P200	Various Suppliers	Varies	Or 8-channel pipettes can be substituted for 12-channel pipettes.
T100 Thermal Cycler	Bio-Rad Laboratories®	1861096	Or an equivalent thermocycler compatible with semi-skirted 96 well plates, 0.2mL PCR tubes with up to 100 µL of sample volume, sample heating and cooling from 4-98°C, and a heated lid capable of 30-105°C.

ITEM	SUPPLIER	PN	NOTES
6-Tube Magnetic Separation Rack	New England Biolabs®	S1506S	Or an equivalent magnetic rack for 1.5 mL tubes.
Vortex-Genie 2®	Scientific Industries®	SI-0236	Or alternative vortex and adapter for 96 well plates, or a thermomixer or alternative shaker that can be set to 800-1000 RPM.
6-inch Platform	Scientific Industries	146-6005-00	
Microplate Foam Insert	Scientific Industries	504-0235-00	
Qubit™ Flex Fluorometer	Thermo Fisher Scientific®	Q33327	Or an equivalent fluorometer.
2100 Bioanalyzer	Agilent®	G2939BA	Choose one.
4200 TapeStation System	Agilent	G2991BA	

Consumables

ITEM	SUPPLIER	PN	NOTES
Reagent basins	Various Suppliers	Varies	Sterile, nuclease-free, 10 mL or 25 mL reagent basins.
SWiSH™ Mini Cell Strainer	Stellar Scientific®	TC70-SWM-20 TC70-SWM-40 TC70-SWM-70 TC70-SWM-100	Choose one or an equivalent sterile cell strainer with an appropriate mesh size for the cell type(s) being fixed (20 µm, 40 µm, 70 µm, 100 µm). We do not recommend FlowMi Cell Strainers (SP Bel-Art).
pluriStrainer® Mini	pluriSelect®	43-10020-40 43-10040-40 43-10070-40 43-10100-40	
Falcon® Cell Strainer	Corning®	431750 431751 431752	
EASYstrainer™, small	Greiner Bio-One™	542120 542140 542170 542100	
Falcon® High Clarity PP Centrifuge Tubes, 15 mL	Corning®	352097	

ITEM	SUPPLIER	PN	NOTES
DNA LoBind® Tubes, 1.5 mL, Snap Cap	Eppendorf®	022431021	Or equivalent DNA low-binding, nuclease-free 1.5 mL tubes.
DNA LoBind® Tubes, 2 mL, Snap Cap	Eppendorf®	022431048	Or equivalent DNA low-binding, nuclease-free 2 mL tubes.
TempAssure® PCR 8-Tube Strips, 0.2 mL	USA Scientific®	1402-4700	Or equivalent nuclease-free 0.2 mL PCR tubes.
AMPure® XP Reagent	Beckman Coulter®	A63880 (5 mL) A63881 (60mL)	Choose one. We do not recommend substituting other magnetic beads.
SPRIselect Reagent	Beckman Coulter	B23317 (5mL) B23318 (60mL)	
KAPA® Pure Beads	Roche®	KK8000 (5 mL) KK8001 (30mL)	
SealPlate®	Excel Scientific	100-SEAL-PLT	Or equivalent PCR plate seals.
Pipette Tips TR LTS 20 µL, 200 µL, 1000 µL	Rainin®	17014961 17014963 17014967	Or appropriate DNA low-binding, DNase/RNase-free, and filtered pipette tips. Do not use wide bore tips.
RNaseZap™ RNase Decontamination Solution	Thermo Fisher Scientific	AM9780	Or equivalent RNase decontamination solution.
Ethyl alcohol, Pure	Sigma-Aldrich	459844	Or equivalent 100% non-denatured ethanol.
Nuclease-Free Water	Sigma-Aldrich	W4502	Or equivalent nuclease-free water.
Trypan Blue	Various Suppliers	Varies	Or alternative dyes to assess cell viability, such as AO/PI.
Qubit dsDNA HS (High Sensitivity) Assay Kit	Thermo Fisher Scientific	Q33230 (100 assays) Q33231 (500 assays)	Or equivalent DNA quantifier.
High Sensitivity DNA Kit	Agilent	5067-4626	Choose one that corresponds to the chosen Bioanalyzer or TapeStation.
High Sensitivity D5000 ScreenTape and Reagents	Agilent	5067-5592 (screen tape) 5067-5593 (sample buffer and ladder)	

Section 1: In situ Cell Barcoding

1.1. Set up and Sample Counting

Prior to barcoding, cells are thawed and counted. Appropriate dilutions, loading concentrations, and loading positions are determined by the Sample Loading Table.

To set up for barcoding:

1. Open the “Evercode WT Mega Sample Loading Table v2” (Excel spreadsheet), which will guide sample dilutions and plate loading in later steps.
2. Cool a centrifuge with swinging bucket rotors to 4°C.
3. Set a water bath to 37°C.
4. Fill a bucket with ice.
5. Prepare a hemocytometer, flow cytometer, or other cell counting device.
6. Gather the following items and handle as indicated below.

ITEM	SOURCE	QTY	HANDLING AND STORAGE
Round 1 Plate	-20°C Reagents	1	Place directly on ice.
Round 2 Plate	-20°C Reagents	1	
○ Resuspension Buffer	-20°C Reagents	1	Thaw at room temperature then store on ice. Mix by inverting 3x.
● Sample Dilution Buffer	-20°C Reagents	1	
○ Round 2 Ligation Buffer	-20°C Reagents	1	Thaw at room temperature then store on ice until use in section 1.3. Mix by inverting 3x before use.
● Spin Additive	4°C Reagents	1	Keep at room temperature.

7. Thaw the previously fixed cell samples in a water bath set to 37°C until all ice crystals dissolve. Thoroughly mix each sample by pipetting and store on ice.

- While minimizing time on ice, count the number of cells in the sample with a hemocytometer or alternative cell counting device. Record the cells count.



Note: When processing many fixed samples, we recommend aliquoting samples after fixation and counting the aliquots the day before using an Evercode kit. See the Important Guidelines section for details.

- Record the sample names and cell count in the Sample Loading Table.



Note: If there are errors in the Sample Loading Table, see the Important Guidelines section for suggestions.

- Place the Round 1 Plate into a thermocycler and run the following program.

THAW ROUND 1 PLATE		
Run Time	Lid Temperature	Sample Volume
10 min	70°C	26 µL
Step	Time	Temperature
1	10 min	25°C
2	Hold	4°C

- Based on the values defined in the Sample Loading Table, dilute each sample with
 - Sample Dilution Buffer and store on ice.
- Proceed immediately to Section 1.2.

1.2. Barcoding Round 1

Samples are loaded into Round 1 Plate. An *in situ* reverse transcription reaction adds well-specific barcodes that also act as sample barcodes. Cells are then pooled, centrifuged, and resuspended.

To add round 1 barcodes:

1. Gently remove the Round 1 Plate from the thermocycler, place in a 0.2 mL tube rack, and centrifuge for **1 minute** at 100 x g at 4°C.
2. Remove the Round 1 Plate from the centrifuge, place in a PCR tube rack, remove the plate seal, and store on ice.



Note: PCR plate seals may be difficult to remove. Carefully peel the seal while applying downward pressure to keep the plate from moving to minimize cross-contamination.

3. With the Round 1 Plate on ice, add **14 µL** of each diluted sample to the appropriate wells of Round 1 Plate as defined in the Sample Loading Table. Mix immediately after dispensing each sample by pipetting 3x.



CRITICAL! Do not reuse any tips during this step. Different tips must be used when pipetting cells into each well of the plate. Never place a tip that has entered one of the wells into a sample or different well.



Note: When pipetting the same sample into many wells, the sample must be mixed by gentle pipetting prior to each transfer to avoid cell settling. Do not vortex the samples.

4. While secured in a PCR tube rack on a flat surface, add a new plate seal.

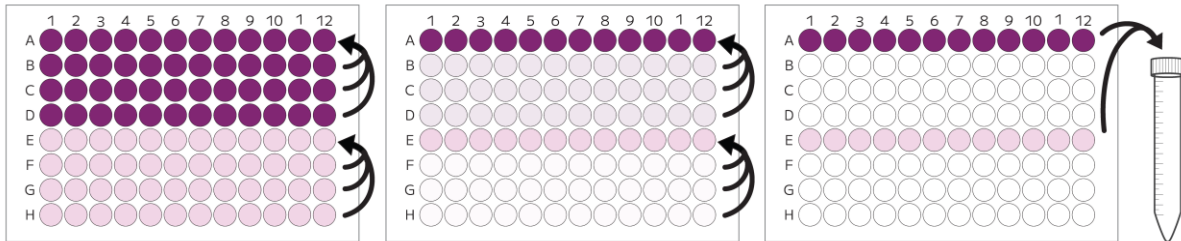
- Place the Round 1 Plate into a thermocycler and run the program below. Upon completion, proceed immediately to the next step.

BARCODING ROUND 1			
Run Time	Lid Temperature	Sample Volume	
40 min	70°C	40 µL	
Step	Time	Temperature	Cycles
1	10 min	50°C	1
2	12 s	8°C	3
3	45 s	15°C	
4	45 s	20°C	
5	30 s	30°C	
6	2 min	42°C	
7	3 min	50°C	
8	5 min	50°C	1
9	Hold	4°C	1

- Remove the Round 1 Plate from the thermocycler, place in a PCR tube rack, and store on ice.
- Place the Round 2 Plate into a thermocycler and run the following program. Proceed immediately to the next step while the program is still running.

THAW ROUND 2 PLATE		
Run Time	Lid Temperature	Sample Volume
10 min	70°C	10 µL
Step	Time	Temperature
1	10 min	25°C
2	Hold	4°C

8. While secured in a PCR tube rack on a flat surface, remove the plate seal from the Round 1 Plate.
9. With the plate and tube on ice, pool all wells from the Round 1 plate into a 15 mL centrifuge tube as follows:



- i. With a multichannel P200 set to 30 μL , mix the sample in row B by pipetting 3x.
 - ii. Transfer **30 μL** from row B to row A.
 - iii. Repeat i-ii for rows C-D to mix the sample then transfer to row A.
 - iv. Transfer any residual liquid in rows B-D to row A with a multichannel P20 set to 10 μL .
 - v. Ensure the cells in row A are in suspension as described in i. Then, transfer the total volume of each well in row A into the same 15 mL tube with a single channel P200 set to 200 μL .
 - vi. Repeat i-ii for rows F-H to mix the sample then transfer to row E.
 - vii. Transfer any residual liquid in rows F-H to row E with a multichannel P20 set to 10 μL .
 - viii. Ensure the cells in row E are in suspension as described in i. Then, transfer the total volume of each well in row E into the same 15 mL tube with a single channel P200 set to 200 μL .
10. Add **19.2 μL** of ● Spin Additive to the 15 mL tube with pooled cells. Do not discard the ● Spin Additive as it will be needed in another step.
 11. Mix by gently inverting the tube just once.
 12. Centrifuge the 15 mL tube in a swinging bucket rotor for **10 minutes** at 250-500 x g at 4°C. Immediately move to the next step after centrifugation.



CRITICAL! Ideal centrifugation speed and duration should be determined empirically for each sample type to optimize retention and resuspension efficiencies. Overly aggressive centrifugation can damage cell integrity and decrease data quality. If the

centrifugation speeds used during fixation gave satisfactory retention, they should be used throughout this protocol.

CRITICAL! Move quickly and handle the samples gently to avoid dislodging the pellet, which will have a significant impact on data quality.

- Remove the supernatant until about ~40 μ L of liquid remains above the pellet. Use a P1000 for the first 1 mL and then a P200 for the remaining volume.



Note: Depending on the number of cell types, a pellet may or may not be visible.

- Fully but gently resuspend the pellet in **1 mL** of **O** Resuspension Buffer.
- Add an additional **1 mL** of **O** Resuspension Buffer for a total addition of 2 mL. Store on ice.
- Proceed immediately to Section 1.3.



Note: If the low input fixation workflow was performed, execute the following step before proceeding to Section 1.3.

- Pipette the sample through a cell strainer into a new 15 mL tube with a P1000. Before transfer, gently mix the cells by pipetting 2x.

1.3. Barcoding Round 2

The pooled cells are added to the Ligation Master Mix, which is loaded into the Round 2 Plate. An *in situ* ligation reaction adds a well-specific barcode to the 3' end of the cDNA. The ligation reaction is quenched with Round 2 Stop Buffer, and the cells are pooled and strained.

To add round 2 barcodes:

- Gather the following items and handle as indicated below:

ITEM	SOURCE	QTY	HANDLING AND STORAGE
● Round 2 Ligation Enzyme	-20°C Reagents	1	Place directly on ice. Briefly centrifuge before use.
● Round 2 Stop Buffer	-20°C Reagents	1	Thaw at room temperature then store on ice. Mix by vortexing.

ITEM	SOURCE	QTY	HANDLING AND STORAGE
Round 3 Plate	-20°C Reagents	1	Place directly on ice.

- On ice, prepare the Round 2 Ligation Master Mix by adding the following to the samples in ○ Resuspension Buffer prepared in Section 1.2. Mix thoroughly by pipetting 10x with a P1000 set to 1000 µL. Store on ice.



Note: Prior to use, mix by inverting 3x the Round 2 Ligation Buffer that was gathered and stored on ice in Section 1.1.

ROUND 2 LIGATION MASTER MIX	
Sample in Resuspension Buffer	2 mL
○ Round 2 Ligation Buffer	1.95 mL
● Round 2 Ligation Enzyme	20 µL
Total Volume	3.97 mL

- Remove the Round 2 Plate from the thermocycler, place in a PCR tube rack, and centrifuge for **1 minute** at 100 x g at 4°C.
- While secured in a PCR tube rack on a flat surface, remove the plate seal from the Round 2 Plate and store on ice.
- Transfer the Round 2 Ligation Master Mix to a basin with a P1000.
- With the Round 2 Plate on ice and the basin on the bench, transfer Round 2 Ligation Master Mix to each well in the Round 2 Plate as follows:
 - Mix the sample in the basin by pipetting 2x with a multichannel P200 set to 40 µL.
 - Transfer **40 µL** of the mix to row A of the Round 2 Plate and mix by pipetting 2x.
 - Repeat i-ii to mix the sample in the basin then transfer to rows B-H.



CRITICAL! Do not reuse any tips during this step. Different tips must be used when pipetting cells into each well of the plate. Never place a tip that has entered one of the wells back into the basin or a different well.



Note: If the volume is insufficient to transfer the last row with a multichannel, tilt the basin and transfer the remaining volume with a single channel pipette. If the volume is still insufficient to fill every well, a few can be left empty without impacting experimental results.

7. While secured in a PCR tube rack on a flat surface, add a new plate seal to Round 2 Plate.
8. Place the Round 2 Plate into a thermocycler and run the following program. Upon completion, proceed immediately to the next step.

BARCODING ROUND 2		
Run Time	Lid Temperature	Sample Volume
15 min	50°C	50 µL
Step	Time	Temperature
1	15 min	16°C
2	Hold	4°C

9. Briefly vortex the ● Round 2 Stop Buffer and ensure there is no precipitate. Transfer the entire volume of this tube to a new basin with a P1000.
10. Remove the Round 2 Plate from the thermocycler, place in a PCR tube rack, remove the plate seal, and store on ice.
11. With the Round 2 Plate on ice and the basin on the bench, transfer **10 µL** of the ● Round 2 Stop Buffer to each well in the Round 2 Plate with a multichannel P20. After each transfer, mix by pipetting exactly 3x.



CRITICAL! Do not reuse any tips during this step. Different tips must be used when pipetting ● Round 2 Stop Buffer into each well of the plate. Never place a tip that has entered one of the wells back into the basin or a different well.

12. While secured in a PCR tube rack on a flat surface, add a new plate seal to Round 2 Plate.

13. Place the Round 2 Plate into a thermocycler and run the following program. Proceed to the next step while the program is still running.

ROUND 2 STOP		
Run Time	Lid Temperature	Sample Volume
5 min	50°C	60 µL
Step	Time	Temperature
1	5 min	16°C
2	Hold	4°C

14. Place the Round 3 Plate into a second thermocycler and run the program below. Proceed to the next step while the program is still running.

THAW ROUND 3 PLATE		
Run Time	Lid Temperature	Sample Volume
10 min	70°C	10 µL
Step	Time	Temperature
1	10 min	25°C
2	Hold	4°C



Note: If a second thermocycler is not available, the same thermocycler used in step 14 can subsequently be used in step 15. However, the Round 2 Plate should be stored on ice until the Thaw Round 3 Plate program is complete.

15. Immediately upon completion of the Round 2 Stop program, transfer the Round 2 Plate from the thermocycler to a PCR tube rack, remove the plate seal, and store on ice.

16. With the Round 2 Plate on ice and the basin on the bench, transfer all the liquid in the Round 2 Plate into a new basin as follows:

- i. With a multichannel P200 set to 50 µL, mix the sample in row A by pipetting 3x.
- ii. Transfer **50 µL** from row A to the basin.
- iii. Repeat i-ii for rows B-H to mix the sample then transfer to the basin.
- iv. Transfer any residual liquid in the Round 2 Plate to the basin with a multichannel P20 set to 10 µL.

17. Pipette the sample through a cell strainer into a new basin with a P1000. Before each transfer, gently mix the cells in the basin by pipetting 2x and tilt the basin to recover as much liquid as possible.



CRITICAL! Do not directly touch the mesh of the cell strainer with gloved hands. To ensure that all of the liquid passes through the strainer, press the tip of the pipette against the mesh to create a tight seal and press the pipette plunger down steadily. All the liquid should pass through the strainer in ~1 second.



Note: Bubbles may form while pooling or straining. They will not affect the quality of the experiment.

18. Proceed immediately to Section 1.4.

1.4. Barcoding Round 3

The ● Round 3 Ligation Enzyme is added to the pooled cells, which are then loaded into the Round 3 Plate. A second *in situ* ligation reaction adds a third well-specific barcode, the Illumina Truseq Read 2 sequence, and a biotin. The sample is then pooled and strained.

To add round 3 barcodes:

1. Gather the following items and handle as indicated below:

ITEM	SOURCE	QTY	HANDLING AND STORAGE
○ Round 3 Stop Buffer	-20°C Reagents	1	Thaw at room temperature then store on ice. Mix by vortexing.
○ Pre-Lysis Wash Buffer	-20°C Reagents	1	Thaw at room temperature then store on ice. Mix by inverting 3x.
● Round 3 Ligation Enzyme	-20°C Reagents	1	Place directly on ice. Briefly centrifuge before use.
● Pre-Lysis Dilution Buffer	-20°C Reagents	1	Thaw at room temperature then store on ice. Mix by inverting 3x.
● Lysis Enzyme	-20°C Reagents	1	Place directly on ice. Briefly centrifuge before use.
● Lysis Buffer	4°C Reagents	1	Place in a 37°C water bath until use.

2. Add **20 μL** of ● Round 3 Ligation Enzyme to the basin containing the strained sample. Mix by gently pipetting 20x with a P1000 set to 1000 μL.

3. Remove the Round 3 Plate from the thermocycler, place in a PCR tube rack, and centrifuge for **1 minute** at 100 x g at 4°C.
4. While secured in a PCR tube rack on a flat surface, remove the plate seal from the Round 3 Plate.
5. With the Round 3 Plate on ice and the basin on the bench, transfer **50 µL** from the basin to each well in the Round 3 Plate as follows:
 - i. Mix the sample in the basin by pipetting 2x with a multichannel P200 set to 50 µL.
 - ii. Transfer **50 µL** of the mix to row A of the Round 3 Plate and mix by pipetting 2x.
 - iii. Repeat i-ii to mix the sample in the basin then transfer to rows B-H.



CRITICAL! Do not reuse any tips during this step. Different tips must be used when pipetting cells into each well of the plate. Never place a tip that has entered one of the wells back into the basin or a different well.



Note: If the volume is insufficient to transfer the last row with a multichannel, tilt the basin and transfer the remaining volume with a single channel pipette. If the volume is still insufficient to fill every well, a few can be left empty without impacting experimental results.

6. While secured in a PCR tube rack on a flat surface, add a new plate seal to Round 3 Plate.
7. Place the Round 3 Plate into a thermocycler and run the following program.

BARCODING ROUND 3		
Run Time	Lid Temperature	Sample Volume
15 min	50°C	60 µL
Step	Time	Temperature
1	15 min	16°C
2	Hold	4°C

8. Briefly vortex the **O** Round 3 Stop Buffer and ensure there is no precipitate. Transfer the entire volume to a new basin with a P1000.

9. Remove the Round 3 Plate from the thermocycler, place in a PCR tube rack, remove the plate seal, and store on ice.
10. With the Round 3 Plate on ice and the basin on the bench, transfer **20 μ L** of the **O** Round 3 Stop Buffer from the basin to each well in the Round 3 Plate with a multichannel P20. After each transfer, mix by pipetting exactly 3x.



CRITICAL! Do not reuse any tips during this step. Different tips must be used when pipetting **O**Round 3 Stop Buffer into each well of the plate. Never place a tip that has entered one of the wells back into the basin or a different well.

11. Without incubation, proceed immediately to the next step.
12. With the Round 3 Plate on ice and the basin on the bench, transfer all the liquid in the Round 3 Plate into a new basin as follows:
 - i. With a multichannel P200 set to 70 μ L, mix the sample in row A by pipetting 3x.
 - ii. Transfer **70 μ L** from row A to the basin.
 - iii. Repeat i-ii for rows B-H to mix the sample then transfer to the basin.
 - iv. Transfer any residual liquid in the Round 3 Plate to the basin with a multichannel P20 pipette set to 10 μ L.
13. Pipette the sample through a cell strainer into a new 15 mL tube with a P1000. Before each transfer, gently mix the cells in the basin by pipetting 2x and tilt the basin to recover as much liquid as possible.



Note: Bubbles may form while pooling or straining. They will not affect the quality of the experiment.

14. Proceed immediately to Section 1.5.

1.5. Lysis and Sublibrary Generation

The cell pool is centrifuged, washed, and resuspended in Pre-Lysis Dilution Buffer. The cells are counted and divided into sublibraries based on the Sublibrary Generation Table in Appendix A. These sublibraries are lysed and stored at -80°C .

To generate and lyse sublibraries:

1. Add **70 μL** of ● Spin Additive to the 15 mL tube with the sample. Gently invert once to mix.
2. Centrifuge the 15 mL tube in a swinging bucket rotor for **10 minutes** at 250-500 x g at 4°C . Immediately move to the next step after centrifugation.



CRITICAL! Move quickly and handle the samples gently to avoid dislodging the pellet, which will impact data quality.

3. Remove the supernatant until about $\sim 40 \mu\text{L}$ of liquid remains above the pellet. Use a P1000 for the first 6 mL and then a P200 for the remaining volume.



Note: Depending on the number of cells and sample type, the pellet may or may not be visible.

4. Fully but gently resuspend the pellet in **1 mL** of ○ Pre-Lysis Wash Buffer.
5. Add an additional **3 mL** of ○ Pre-Lysis Wash Buffer for a total addition of 4 mL.
6. Centrifuge the 15 mL tube in a swinging bucket rotor for **10 minutes** at 250-500 x g at 4°C . Immediately move to the next step after centrifugation.



CRITICAL! Move quickly and handle the samples gently to avoid dislodging the pellet, which will impact data quality.

7. Remove the supernatant until about $\sim 40 \mu\text{L}$ of liquid remains above the pellet. Use a P1000 for the first 3 mL and then a P200 for the remaining volume.
8. Fully but gently resuspend the pellet in **200 μL** of ● Pre-Lysis Dilution Buffer for a final total volume of **240 μL** . Store on ice.



Note: Do not discard ● Pre-Lysis Dilution Buffer as it will be used in another step.

- While minimizing time on ice, count the number of cells in the sample with a hemocytometer or alternative cell counting device. Record the cell count.



CRITICAL! We strongly recommend using a hemocytometer and carefully mixing the sample before collecting an aliquot for counting to ensure accurate sublibrary loading.

- Decide how to divide cells across the sublibraries. See the “Sublibrary Loading” in the Important Guidelines section for strategies. Use the Sublibrary Generation Table in Appendix A to determine the volume of sample and ● Pre-Lysis Dilution Buffer that should be added to each sublibrary.



CRITICAL! Do not add more than 62,500 cells to a sublibrary. Adding additional cells will result in an increased multiplet rate.

- Ensure the cells are in suspension by pipetting 5x with a P200 set to 200 μL prior to each transfer. Add the appropriate volume of sample to 16 different 0.2 mL PCR tubes.
- Add the appropriate volume of ● Pre-Lysis Dilution Buffer to the 0.2 mL tubes for a total volume of 25 μL .
- Prepare the Lysis Master Mix in a new 1.5 mL tube as follows. Mix by pipetting 3x with a P1000 set to 425 μL . Store at room temperature.

LYSIS MASTER MIX	
● Lysis Buffer	440 μL
● Lysis Enzyme	88 μL
Total Volume	528 μL



Note: Ensure that there is no precipitate before using the ● Lysis Buffer.



CRITICAL! Do not place Lysis Master Mix on ice, as a precipitate will form.

- Add **30 μL** of Lysis Master Mix to each 0.2 mL tube with diluted cells. Store at room temperature.
- Vortex the 0.2 mL tube(s) for **1 minute**. Briefly centrifuge.

16. Place the tube(s) into a thermocycler and run the following program. If continuing to Section 2 without freezing the sample, proceed to Section 2 while the program is still running.

CELL LYSIS		
Run Time	Lid Temperature	Sample Volume
15 min	80°C	55 µL
Step	Time	Temperature
1	15 min	65°C
2	Hold	4°C

17. Freeze the lysate(s) at -80°C or proceed to Section 2.



Safe stopping point: Sublibrary lysates can be stored at -80°C for up to 6 months.

Section 2: cDNA Capture and Amplification

2.1. cDNA Capture

The barcoded cDNA is captured with streptavidin-coated magnetic beads and washed to remove cellular debris.

To capture the cDNA:

1. Fill an ice bucket.
2. Gather the following equipment:
 - i. Magnetic rack for 1.5 mL tubes
 - ii. Parse Biosciences magnetic rack for 0.2 mL PCR tubes
 - iii. Vortex with an adapter for 96 well plates
3. Gather the following items and handle as indicated below:

ITEM	SOURCE	QTY	HANDLING AND STORAGE
● Streptavidin Beads	4°C Reagents	1	Keep at room temperature.
○ Bead Wash Buffer	-20°C Reagents	1	Thaw at room temperature then store on ice. Mix by inverting 3x
○ Wash Buffer 1	-20°C Reagents	1	
○ Wash Buffer 2	-20°C Reagents	1	
● Capture Enhancer	-20°C Reagents	1	Place directly on ice. Briefly centrifuge before use.
● Binding Buffer	-20°C Reagents	1	Thaw at room temperature then store on ice. Mix by inverting 3x

4. Remove the desired tube(s) of lysate from the thermocycler (if continuing directly from Section 1) or from storage at -80°C.
5. If previously frozen, incubate the tube(s) in water bath or thermocycler at 37°C for **5 minutes**.



Note: Ensure there is no precipitation before proceeding. Otherwise, an additional 5 minutes at 37°C should be sufficient.

6. Briefly centrifuge and store at room temperature.
7. Briefly centrifuge ● Capture Enhancer and gently mix by pipetting 2x with a P20 set to 15 μL .
8. Add **2.5 μL** of ● Capture Enhancer to each tube of lysate.
9. Place the tube(s) into a 96 well PCR tube rack, press to secure, and ensure the caps are secured tightly. Place the lid on the rack.
10. Place the rack onto a vortex mixer with a plate adapter. Push to secure. Vortex the plastic holder on 100% power for **1 minute**.
11. Remove the tube(s) from the vortex mixer. Briefly centrifuge.
12. Incubate for **10 minutes** at room temperature. Proceed immediately to the next step during the incubation.



Note: This incubation can be extended by 5 additional minutes (up to a total of 15 minutes) without negatively impacting performance.

13. Vortex ● Streptavidin Beads until fully mixed. Add the appropriate volume of ● Streptavidin Beads to a new 1.5 mL tube as follows, depending on the number of lysates being processed:

Lysates being processed	1	16
● Streptavidin Beads	44 μL	704 μL

14. Place the tube on the magnetic rack for 1.5 mL tubes until the solution clears (~2 minutes).
15. Remove and discard the supernatant.
16. Remove the tube from the magnetic rack and fully resuspend the bead pellet in the appropriate volume of ○ Bead Wash Buffer as follows:

Lysates being processed	1	16
○ Bead Wash Buffer	50 μL	800 μL



Note: Ensure no beads are stuck to the sides of the 1.5 mL tube.

17. Place the tube on the magnetic rack for 1.5 mL tubes until the solution clears (~2 minutes).
18. Remove and discard the supernatant.
19. Repeat steps 18-20 twice for a total of 3 washes.
20. Remove the tube from the magnetic rack. Fully resuspend the pellet in the appropriate volume of ● Binding Buffer as follows and store at room temperature.

Lysates being processed	1	16
● Binding Buffer	55 μ L	880 μ L

21. Add **50 μ L** of ● Streptavidin Beads in ● Binding Buffer to each tube of lysate.
22. Place the tube(s) into a 96 well PCR tube rack, press to secure, and ensure the caps are secured tightly. Place the lid on the rack.
23. Place the rack onto a vortex mixer with a plate adapter. Push to secure. Vortex plastic holder on 100% power for **1 minute**.
24. Vortex on 20% power (~800-1000 RPM) for **30 minutes** at room temperature.



Note: To ensure the beads are being mixed sufficiently, check that the beads are in solution 10 minutes into the incubation. If settled, increase the vortex mixing speed to keep the beads in solution.

25. Remove the tube(s) from the vortex mixer.
26. Briefly vortex the tube(s) on a standard vortex adapter. Briefly centrifuge without letting beads collect at the bottom of the tube(s).
27. Place the tube(s) on the high magnet position of the Parse Biosciences Magnetic Rack, so the magnet is closer to the top of the 0.2 mL tubes. Incubate until the solution clears (~2 minutes).



CRITICAL! Ensure the supernatant is completely clear before proceeding. Discarding any beads in the supernatant will result in a reduction of transcripts and genes detected per cell. See "Magnetic Racks and Bead Cleanups" in the Important Guidelines section for representative images.

28. While still on the magnetic rack, remove and discard the supernatant.

29. Remove the tube(s) from the magnetic rack. Fully resuspend each bead pellet with **125 µL** ○ Wash Buffer 1.
30. Incubate for **1 minute** at room temperature.
31. Return the tube(s) to the high position of the magnetic rack. Incubate until the solution clears (~2 minutes).
32. While still on the magnetic rack, remove and discard the supernatant.
33. Repeat steps 31-34 once for a total of 2 washes with ○ Wash Buffer 1.
34. Remove the tube(s) from the magnetic rack. Fully resuspend each bead pellet with **125 µL** ○ Wash Buffer 2.



Note: Save ○ Wash Buffer 2 to use for optional storage before cDNA amplification.

35. Incubate for **1 minute** at room temperature.
36. Proceed immediately to Section 2.2.

2.2. cDNA Template Switch

After an additional wash, the Template Switch Master Mix is added to the captured cDNA. The template switch reaction adds a 5' adapter to the cDNA.

To perform template switch:

1. Gather the following items and handle as indicated below:

ITEM	SOURCE	QTY	HANDLING AND STORAGE
○ Wash Buffer 3	-20°C Reagents	1	Thaw and store at room temperature. Mix by inverting 3x.
● Template Switch Buffer	-20°C Reagents	1	Thaw at room temperature then place on ice. Mix by inverting 3x. Briefly centrifuge before use.
● Template Switch Primer	-20°C Reagents	1	Briefly centrifuge before use.
● Template Switch Enzyme	-20°C Reagents	1	Keep on ice. Briefly centrifuge before use.



Note: Ensure that there is no precipitate in the ● Template Switch Buffer before proceeding.

2. Prepare the Template Switch Master Mix in a new 2 mL tube as follows, depending on the number of sublibraries being processed. Mix by pipetting 10x and store on ice.

TEMPLATE SWITCH MASTER MIX		
Number of Samples	1	16
● Template Switch Buffer	101.75 μ L	1628 μ L
● Template Switch Primer	2.75 μ L	44 μ L
● Template Switch Enzyme	5.5 μ L	88 μ L
Total	110 μ L	1760 μ L

3. Place each tube of captured cDNA from Section 2.1 on the high position of the magnetic rack. Incubate until the solution clears (~2 minutes).
4. While still on the magnetic rack, remove and discard the supernatant.
5. While still on the magnetic rack, add **125 μ L** of **O** Wash Buffer 3 to each tube.



CRITICAL! Do not discard the **O**Wash Buffer 3 as it will be used in another step.

6. Incubate for **1 minute** at room temperature.
7. While still on the magnetic rack, remove and discard the **O** Wash Buffer 3.
8. Remove the tube(s) from the magnetic rack. Fully resuspend each bead pellet with **100 μ L** of the Template Switch Master Mix.



Note: Because the Template Switch Master Mix is viscous, it may take time to fully resuspend the beads.

9. Briefly centrifuge without letting beads collect at the bottom of the tube(s).
10. Incubate for **30 minutes** at room temperature.
11. Fully resuspend each bead pellet by mixing 5x with a P200 set to 75 μ L.

12. Place the tube(s) into a thermocycler and run the following program.

TEMPLATE SWITCH		
Run Time	Lid Temperature	Sample Volume
60 min	70°C	100 µL
Step	Time	Temperature
1	60 min	42°C
2	Hold	4°C

13. Proceed immediately to Section 2.3. Alternatively, proceed to step 14 to store samples prior to cDNA amplification.

14. Place the tube(s) on the high position of the magnetic rack. Incubate until the solution clears (~2 minutes).



Note: Beads may need to be resuspended if they have settled.

15. While still on the magnetic rack, remove and discard the supernatant.

16. Remove the tube(s) from the magnetic rack. Fully resuspend each bead pellet with **125 µL O Wash Buffer 2**.



Safe stopping point: Template switched cDNA can be stored at 4°C for up to 18 hours. Do not freeze.

2.3. cDNA Amplification

The captured cDNA is washed and amplified with Template Switch Primer and Illumina Truseq Read 2 specific primers.

To amplify the cDNA:

1. Equilibrate **80 µL** of SPRI beads per lysate to room temperature. Set aside for future use.

2. Gather the following items and handle as indicated below:

ITEM	SOURCE	QTY	HANDLING AND STORAGE
● cDNA Amp Mix	-20°C Reagents	1	Thaw at room temperature then place on ice. Mix by inverting 3x. Briefly centrifuge before use.
● cDNA Amp Primers	-20°C Reagents	1	

3. Prepare the cDNA Amplification Master Mix in a new 2 mL tube as follows. Mix by pipetting 10x and store on ice.

cDNA AMPLIFICATION MASTER MIX		
Number of Sublibraries	1	16
● cDNA Amp Mix	60.5 μ L	968 μ L
● cDNA Amp Primers	60.5 μ L	968 μ L
Total	121 μ L	1936 μ L

4. Place each tube of template switched cDNA from Section 2.2 on the high position of the Parse Biosciences Magnetic Rack. Incubate until the solution clears (~2 minutes).



Note: You may need to pipette mix to resuspend settled beads so they separate appropriately.

5. While still on the magnetic rack, remove and discard the supernatant.
6. While still on the magnetic rack, add **125 μ L** of **O** Wash Buffer 3 to each tube.
7. Incubate for **1 minute** at room temperature.
8. While still on the magnetic rack, remove and discard the **O** Wash Buffer 3.
9. Remove tube(s) from the magnetic rack. Fully resuspend each bead pellet with **100 μ L** of the Amplification Master Mix. Store on ice.

10. Determine the number of PCR cycles required for cDNA amplification based on the table below. Although these recommendations are appropriate for many cell types, the number of cycles may need to be optimized for each sample type.

NUMBER OF PCR CYCLES				
Cells in Sublibrary	Cell lines	Human Primary B Cells	Human PBMCs	Mouse Primary B Cells
200-999	11	12	13	14
1,000-1,999	9	10	11	12
2,000-5,999	7	8	9	10
6,000-12,499	6	7	8	9
12,500-24,999	4	5	6	7
25,000-62,500	3	4	5	6

11. Place the tube(s) into a thermocycler and run the following program.

cDNA AMPLIFICATION			
Run Time	Lid Temperature	Sample Volume	
50-70 min	105°C	100 µL	
Step	Time	Temperature	Cycles
1	3 min	95°C	1
2	20 sec	98°C	5
3*	45 sec	65°C*	
4	3 min	72°C	
5	20 sec	98°C	Variable, see above
6*	20 sec	67°C*	
7	3 min	72°C	
8	5 min	72°C	1
9	Hold	4°C	1



CRITICAL! If processing sublibraries with different numbers of cells, they should be amplified in separate thermocyclers according to the recommendations above.



Note: Annealing steps 3* and 6* have different time and temperature settings. Ensure these are correct before starting the program



Safe stopping point: Amplified cDNA can be stored at 4°C for up to 18 hours.

2.4. Post-Amplification Purification

Amplified cDNA is purified with a 0.8x SPRI bead cleanup.

To purify the cDNA:

1. For each tube of amplified cDNA, gather **400 µL** of freshly prepared 85% ethanol.
2. Gather the SPRI beads equilibrated and set aside in 2.3.1 (**80 µL** per tube of amplified cDNA).



Note: Ensure the SPRI beads have been equilibrated to room temperature for at least 30 minutes.

3. Place each tube of amplified cDNA from Section 2.3 on the high position of the Parse Biosciences Magnetic Rack. Incubate until the solution clears (~2 minutes).



Note: If beads remain in solution after 2-3 minutes, pipette 3x in the bottom of the PCR tube with a P200 set to 40 µL. Then return to the magnet and incubate until the solution clears.

4. While still on the magnetic rack, transfer **90 µL** of the supernatant containing the cDNA into a new 0.2 mL tube(s). Store at room temperature.
5. Vortex the SPRI beads until fully mixed. Add **72 µL** of SPRI beads to each tube with amplified cDNA.
6. Vortex the tube(s) for **5 seconds**. Briefly centrifuge.
7. Incubate for **5 minutes** at room temperature.
8. Place the tube(s) on the high position of the magnetic rack. Incubate until the solution clears (~2 minutes).
9. While still on the magnetic rack, remove and discard the supernatant.
10. While still on the magnetic rack, add **180 µL** of 85% ethanol to each tube.

11. Incubate for **1 minute** at room temperature.
12. While still on the magnetic rack, remove and discard the supernatant.
13. Repeat steps 10-12 once for a total of 2 washes. Remove any residual ethanol with a P20.
14. While still on the magnetic rack, air dry the SPRI beads (~2 minutes).



CRITICAL! Do not over-dry the beads, which can lead to a substantial loss in yield. “Cracking” of the beads is a sign of over-drying.

15. Remove the tube(s) from the magnetic rack. Fully resuspend each bead pellet with **25 µL** of nuclease-free water.
16. Incubate for **10 minutes** at 37°C in a thermocycler.
17. Place the tube(s) on the low magnet position of the magnetic rack, so the magnet is closer to the bottom of the 0.2 mL tubes. Incubate until the solution clears (~2 minutes).



Note: See ‘Magnetic Racks and Bead Cleanups’ in the Important Guidelines section for an image of the low position.

18. While still on the magnetic rack, transfer **25 µL** of the supernatant containing the purified cDNA into new 0.2 mL tube(s). Store on ice.

2.5. cDNA Quantification

The concentration and size distribution of the cDNA are measured with fluorescent dyes and capillary electrophoresis.

To quantify the cDNA:

1. Measure the concentration of each tube of purified cDNA from Section 2.4 with the Qubit dsDNA HS (High Sensitivity) Assay Kit according to the manufacturer’s instructions. Record the concentration(s), which will be used in Section 3.
2. Assess the size distribution of each tube of purified cDNA with a High Sensitivity DNA Kit on the Agilent Bioanalyzer System or High Sensitivity D5000 ScreenTape and Reagents on the Agilent TapeStation System according to the manufacturer’s instructions.

STOP Safe stopping point: Amplified cDNA can be stored at 4°C for up to 48 hours or at -20°C for up to 3 months.

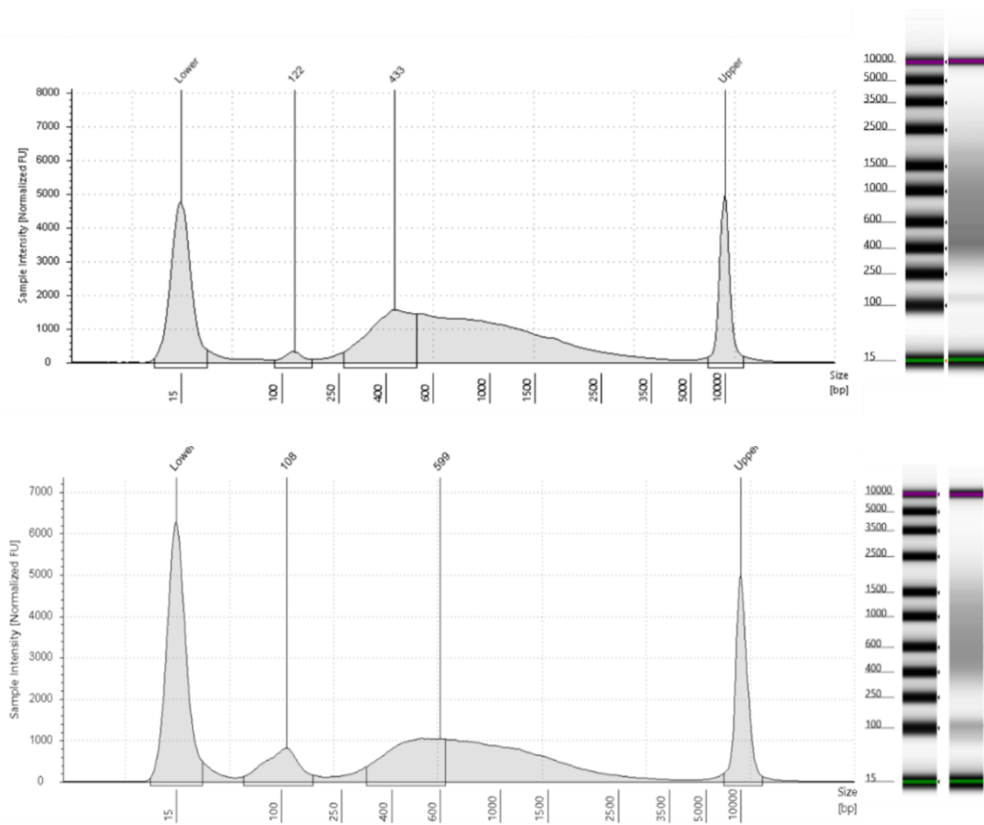


Figure 4: Expected post-amplification sublibrary cDNA size distribution. Example trace of Human cDNA (top) and Mouse cDNA (bottom) run on a TapeStation.

Note: Samples may need to be diluted to be within the manufacturer's recommended concentration range. Typically, between a 1:3 to 1:10 dilution is appropriate.



Note: The traces above are representative of typical TapeStation cDNA traces. The shape and prominence of the trace is dependent on cell type, sublibrary size, and amount of DNA loaded into the TapeStation. Sublibraries with minor deviations can still produce high quality data.

Section 3: Sequencing Library Preparation

3.1 Fragmentation and End Prep

Barcoded and amplified cDNA is fragmented, end repaired and A-tailed in a single reaction.

To prepare for fragmentation and end prep:

1. For each sublibrary, prepare **1.2 mL** of 85% ethanol with nuclease-free water.
2. Equilibrate **180 µL** of SPRI beads per sublibrary to room temperature. Set aside for future use.
3. Fill an ice bucket.
4. Take out the Parse Biosciences magnetic rack for 0.2 mL PCR tubes.
5. Obtain recorded cDNA concentrations from Section 2.5.
6. Gather the following items and handle as indicated below.

ITEM	SOURCE	QTY	HANDLING AND STORAGE
● Fragm/End Prep Buffer	-20°C Reagents	1	Thaw at room temperature then store on ice.
● Fragm/End Prep Enzymes	-20°C Reagents	1	Place directly on ice. Briefly centrifuge before use.

7. Vortex the tube(s) of cDNA for **5 seconds**. Briefly centrifuge.
8. Prepare Diluted cDNA in new 0.2 mL tube(s) as follows to a final volume of 35 µL and store on ice. Store any remaining purified cDNA at -20°C.

DILUTED cDNA	
Purified cDNA	10 µL
Nuclease-free water	25 µL
Total Volume	35 µL

9. Start the following program to ensure the thermocycler is cool prior to use.

FRAGMENTATION AND END PREP		
Run Time	Lid Temperature	Sample Volume
35 min	70°C	50 µL
Step	Time	Temperature
1	Hold*	4°C
2	5 min	32°C
3	30 min	65°C
4	Hold	4°C



Note: * This hold ensures that the thermocycler is cooled and ready for step 13.

10. Vortex the ● Fragm/End Prep Buffer for **5 seconds**. Briefly centrifuge.



Note: Confirm the ● Fragm/End Prep Buffer is fully thawed without precipitation.

11. Prepare the Fragmentation and End Prep Master Mix in a new 1.5 mL tube as follows. Mix by pipetting 10x and store on ice.

FRAGMENTATION AND END PREP MASTER MIX		
Number of Sublibraries	1	16
● Fragm/End Prep Buffer	5.5 µL	88 µL
● Fragm/End Prep Enzymes	11 µL	176 µL
Total	16.5 µL	264 µL

12. Add **15 µL** of Fragmentation and End Prep Master Mix to each tube of Diluted cDNA. Mix by pipetting 10x with a P200 multichannel pipette set to 40 µL. Briefly centrifuge.

13. Place the tube(s) into the cooled thermocycler. Skip the 4°C hold in Step 1 so the thermocycler proceeds to Step 2 of the Fragmentation and End Prep program.



Note: Ensure the thermocycler has cooled to 4°C prior to adding the tubes.

14. As soon as the program reaches step 4 of the thermocycling program (4°C), store the tube(s) on ice and proceed immediately to Section 3.2.

3.2. Post-Fragmentation and End Prep Size Selection

The fragmented and end prepped DNA are size selected with a single sided SPRI cleanup.

To size select the fragmented and end prepped DNA:

1. Gather freshly prepared 85% ethanol.
2. Gather room temperature SPRI beads.



Note: Ensure the SPRI beads have been equilibrated to room temperature for at least 30 minutes.

3. Vortex the SPRI beads until fully mixed. Add **40 µL** of SPRI beads to each tube of fragmented and end prepped DNA.
4. Vortex the tube(s) for **5 seconds**. Briefly centrifuge.
5. Incubate for **5 minutes** at room temperature.
6. Place the tube(s) on the high position of the magnetic rack for 0.2 mL tubes. Incubate until the solution clears (~3 minutes).



CRITICAL! Ensure the solution is completely clear before proceeding.

7. While still on the magnetic rack, remove and discard the supernatant.
8. While still on the magnetic rack, add **180 µL** of 85% ethanol to each tube.
9. Incubate for **1 minute** at room temperature.
10. While still on the magnetic rack, remove and discard the supernatant.

11. Repeat steps 8-10 once for a total of 2 washes. Remove any residual ethanol with a P20.
12. While still on the magnetic rack, air dry the SPRI beads (~30 seconds).



CRITICAL! Do not over-dry the beads, which can lead to substantial loss in yield. "Cracking" of the beads is a sign of over-drying.

13. Remove the tube(s) from the magnetic rack. Fully resuspend each bead pellet with **50 µL** of nuclease-free water.
14. Incubate for **5 minutes** at room temperature.
15. Place the tube(s) on the high position of the magnetic rack. Incubate until the solution clears (~2 minutes).
16. While still on the magnetic rack, transfer **50 µL** of the supernatant into new 0.2 mL tube(s).



Safe stopping point: The size-selected fragmented and end prepped DNA can be stored at 4°C for up to 18 hours or at -20°C for up to 2 weeks.

3.3. Adapter Ligation

Adapters with an Illumina Truseq Read 1 sequence are ligated to the 5' end of the fragmented and end prepped DNA.

To ligate adapters:

1. Gather the following items and handle as indicated below.

ITEM	SOURCE	QTY	HANDLING AND STORAGE
● Ligation Adapter	-20°C Reagents	1	Thaw at room temperature then place on ice. Mix by inverting 3x. Briefly centrifuge before use.
● Adapter Ligation Buffer	-20°C Reagents	1	
● Adapter Ligation Enzyme	-20°C Reagents	1	Place directly on ice. Briefly centrifuge before use.
● Library Amp Mix	-20°C Reagents	1	Thaw at room temperature then place on ice. Mix by inverting 3x. Briefly centrifuge before use.
UDI Plate - WT	-20°C Reagents	1 sealed well per sublibrary	Thaw at room temperature then place on ice.

2. Prepare the Adapter Ligation Master Mix in a new 1.5 mL tube as follows. Mix by pipetting 10x and store on ice.

ADAPTER LIGATION MASTER MIX		
Number of Sublibraries	1	16
Nuclease-free water	19.25 μL	308 μL
● Adapter Ligation Buffer	22 μL	352 μL
● Adapter Ligation Enzyme	11 μL	176 μL
● Ligation Adapter	2.75 μL	44 μL
Total	55 μL	880 μL

3. Add **50 μL** of Adapter Ligation Master Mix to each tube of purified fragmented and end prepped DNA from Section 3.2. Mix by pipetting 10x with a P200 multichannel pipette set to 80 μL . Briefly centrifuge.
4. Place the tube(s) into a thermocycler and run the program below.

ADAPTER LIGATION		
Run Time	Lid Temperature	Sample Volume
15 min	30°C*	100 μL
Step	Time	Temperature
1	15 min	20°C
2	Hold	4°C



Note: * If the thermocycler's lid can't reach the recommended temperature of 30°C, turn the lid heating off.

5. As soon as the program reaches 4°C, store the adapter ligated DNA on ice and proceed immediately to Section 3.4.

3.4. Post-Ligation Purification

Adapter ligated DNA is purified with a 0.8x SPRI bead cleanup.

To purify the ligated DNA:

1. Gather freshly prepared 85% ethanol.
2. Gather room temperature SPRI beads (~90 μL per sublibrary)



Note: Ensure the SPRI beads have been equilibrated to room temperature for at least 30 minutes.

3. Vortex the SPRI beads until fully mixed. Add **80 μL** of SPRI beads to each tube of adapter ligated DNA from Section 3.3.
4. Vortex the tube(s) for **5 seconds**. Briefly centrifuge.
5. Incubate for **5 minutes** at room temperature.
6. Place the tube(s) on the high position of the magnetic rack for 0.2 mL tubes. Incubate until the solution clears (~2 minutes).
7. While still on the magnetic rack, remove and discard the supernatant.
8. While still on the magnetic rack, add **180 μL** of 85% ethanol to each tube.
9. Incubate for **1 minute** at room temperature.
10. While still on the magnetic rack, remove and discard the supernatant.
11. Repeat steps 8-10 once for a total of 2 washes. Remove any residual ethanol with a P20.
12. While still on the magnetic rack, air dry the SPRI beads (~2 minutes).
13. Remove the tube(s) from the magnetic rack. Fully resuspend each bead pellet with **23 μL** of nuclease-free water.
14. Incubate for **5 minutes** at room temperature.
15. Place the tube(s) on the low magnet position of the magnetic rack, so the magnet is closer to the bottom of the 0.2 mL tubes. Incubate until the solution clears (~2 minutes).

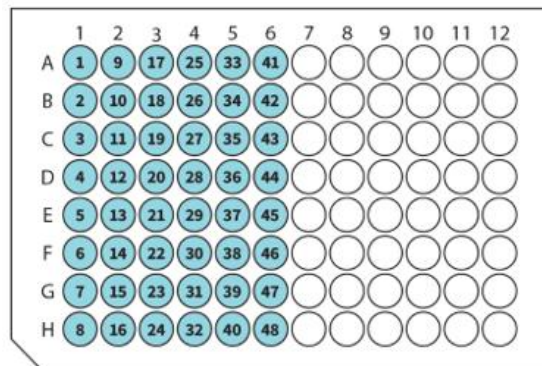
16. While still on the magnetic rack, transfer exactly **21 μL** of the supernatant containing the purified adapter ligated DNA into new 0.2 mL tube(s). Store on ice.
17. Proceed immediately to Section 3.5.

3.5. Barcoding Round 4

Purified adapter ligated DNA is PCR amplified with Illumina Truseq Read 1 and Read 2 primers. This indexing PCR generates sequencing libraries and adds i5/i7 UDIs that act as a fourth cell barcode.

To add round 4 barcodes:

1. Centrifuge the UDI Plate - WT at 100 x g for **1 minute**.
2. Wipe the surface of the plate with 70% ethanol and allow to dry.
3. Orient the UDI Plate - WT with the notch on the bottom left as pictured below. For each sublibrary being processed, choose one unused well of the UDI Plate - WT and record the well position and number for each sublibrary.



4. With a multichannel P20, pierce the seal of the chosen wells of the UDI Plate - WT.
5. With a multichannel P20 and new tips, mix by pipetting 5x then immediately transfer **4 μL** from a chosen unused well of the UDI Plate - WT to its corresponding tube of purified adapter ligated DNA from Section 3.4.



CRITICAL! Only transfer primers from 1 well of the UDI Plate - WT to 1 tube of adapter ligated DNA.

6. If any unused wells remain in the UDI Plate - WT, store the plate at -20°C . Do not reuse wells.

- Add **25 µL** of ● Library Amp Mix to each tube. Mix by pipetting 10x with a P200 multichannel pipette set to 25 µL. Briefly centrifuge.
- Determine the number of PCR cycles required for the Indexing PCR based on the amount of cDNA added to the fragmentation and end prep reaction as recorded in Section 2.5.

NUMBER OF PCR CYCLES	
cDNA Input (ng)	PCR Cycles
10-24	13
25-49	12
50-99	11
100-299	10
300-999	8
1,000 or more	7

- Place the tube(s) into a thermocycler and run the following program.

INDEXING PCR			
Run Time	Lid Temperature	Sample Volume	
~30 min	105°C	50 µL	
Step	Time	Temperature	Cycles
1	3 min	95°C	1
2	20 s	98°C	Varies, see table above
3	20 s	67°C	
4	1 min	72°C	
5	5 min	72°C	1
6	Hold	4°C	1



CRITICAL! If processing sublibraries with different cDNA input, they should be amplified in separate thermocyclers according to the recommendations above.



Safe stopping point: Prior to size selection, sequencing libraries can be stored at 4°C for up to 18 hours.

3.6. Post-Round 4 Barcoding Size Selection

The sequencing libraries are size selected with a single sided SPRI cleanup.

To size select the sequencing libraries:

1. Gather freshly prepared 85% ethanol.
2. Gather room temperature SPRI beads (~50 μL per sublibrary).



Note: Ensure the SPRI beads have been equilibrated to room temperature for at least 30 minutes.

3. Vortex the SPRI beads until fully mixed. Add **40 μL** of SPRI beads to each sequencing library tube.
4. Vortex the tube(s) for **5 seconds**. Briefly centrifuge.
5. Incubate for **5 minutes** at room temperature.
6. Place the tube(s) on the high position of the magnetic rack for 0.2 mL tubes. Incubate until the solution clears (~3 minutes).



CRITICAL! This may take longer due to the low volume of beads. Ensure the solution is completely clear before proceeding.

7. While still on the magnetic rack, remove and discard the supernatant.
8. While still on the magnetic rack, add **180 μL** of 85% ethanol to each tube.
9. Incubate for **1 minute** at room temperature.
10. While still on the magnetic rack, remove and discard the supernatant.
11. Repeat steps 8-10 once for a total of 2 washes. Remove any residual ethanol with a P20.
12. While still on the magnetic rack, air dry the SPRI beads (~30 seconds).
13. Remove the tube(s) from the magnetic rack. Fully resuspend each bead pellet with **20 μL** of nuclease-free water.
14. Incubate for **5 minutes** at room temperature.
15. Place the tube(s) on the low position of the magnetic rack. Incubate until the solution clears (~2 minutes).

16. While still on the magnetic rack, transfer the supernatant into new 0.2 mL tube(s). Store on ice.

3.7. Sequencing Library Quantification

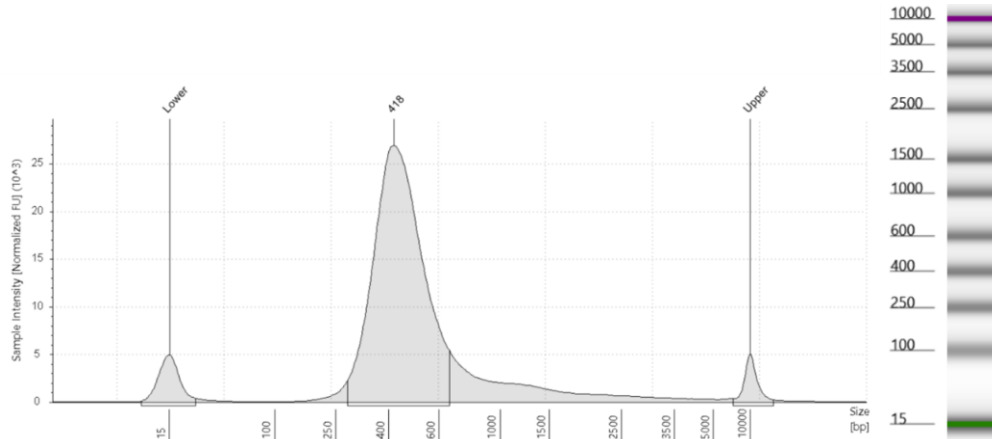
The concentration and size distribution of the sequencing libraries are measured with fluorescent dyes and capillary electrophoresis. Sequencing libraries can be stored at -20°C for up to 3 months.

To quantify the sequencing libraries:

1. Measure the concentration of each purified sequencing library from Section 3.6 with the Qubit dsDNA HS (High Sensitivity) Assay Kit according to the manufacturer's instructions.
2. Assess the size distribution of each purified sequencing library with a High Sensitivity DNA Kit on the Agilent Bioanalyzer System or High Sensitivity D5000 ScreenTape and Reagents on the Agilent TapeStation System according to the manufacturer's instructions.



Safe stopping point: Sequencing libraries can be stored at -20°C for up to 3 months.



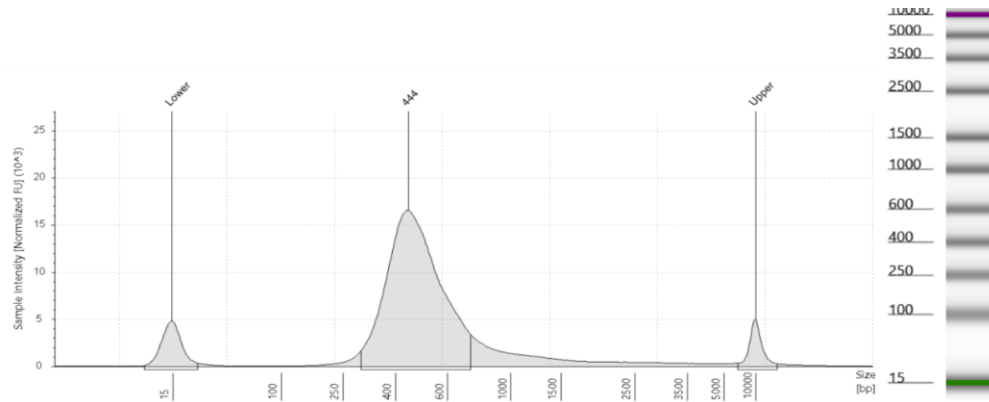


Figure 5: Expected Size Distribution before Illumina Sequencing. Example trace of Human DNA (Top) and Mouse DNA (Bottom) from indexed sublibraries run on a TapeStation.

Note: Samples may need to be diluted to be within the manufacturer's recommended concentration range. Typically, between a 1:3 to 1:10 dilution is appropriate.

Note: The traces above are representative of typical TapeStation of DNA from indexed sublibraries. There should be a peak between 400-500 bp. The prominence of the trace is dependent on the amount of DNA loaded into the TapeStation. Sublibraries with minor deviations can still produce high quality data.



Note: If using a Bioanalyzer, there may be an additional peak present. This typically occurs if products are overamplified, but it should not impact sequencing or data quality (assuming there is still a peak present at 400-500 bp). Do not use this additional peak when estimating amplicon size.

Section 4: BCR Library Preparation

4.1. Pool Libraries

Libraries are pooled and prepared for the hybridization reaction. Up to 8 indexed sublibraries can be used for BCR library preparation. If processing more than 8 sublibraries, then two BCR library pools should be prepared. No more than **12 µL** per sublibrary should be used to prepare the BCR library to ensure that there is sufficient input for WT sequencing. When pooling sublibraries in step 10, vacuum concentration can be used rather than SPRI bead concentration. See Appendix D for a protocol.

To prepare for BCR library preparation:

1. Fill a bucket with ice.
2. Set a heat block to 65°C.
3. Program a thermocycler to 95°C and set the heated lid to 105°C.
4. Equilibrate SPRI beads (Ampure XP or KAPA Pure Beads) to room temperature for at least 30 minutes.
5. Prepare at least 700 µL of 85% ethanol per reaction and the magnetic rack for 1.5 mL tubes.
6. Gather the following items and handle as indicated below.

ITEM	SOURCE	QTY	HANDLING AND STORAGE
Evercode BCR Indexed Sublibraries	User Stored Location (-20°C)	Up to 8 per reaction	Thaw on ice.
● Hybridization Mix	BCR -20°C Reagents	1	Thaw on ice. Briefly centrifuge before use.
● Hybridization Enhancer	BCR -20°C Reagents	1	
● Blocker Solution	BCR -20°C Reagents	1	
● Evercode Blocker Solution	BCR -20°C Reagents	1	
● Human or Mouse or Transgenic Mouse BCR Panel	BCR -20°C Reagents	1	

7. Incubate the ● Hybridization Mix in the heat block at 65°C for **10 minutes** or until no precipitate is present before proceeding.
8. Incubate the ● Hybridization Mix at room temperature for **5 minutes** to equilibrate the solution.
9. Vortex sublibraries (2-3 seconds). Briefly centrifuge (~2 seconds).
10. Pool up to 8 indexed sublibraries into a 1.5 mL tube to make a Library Pool(s). We recommend adding **100 ng** of each sublibrary going into BCR library preparation for a maximum of 800 ng of input per tube. If using 16 sublibraries, pool 8 sublibraries into one pool and the other 8 sublibraries into the other pool.



Note: See "BCR Library Generation" in Important Guidelines if your sublibraries contain less than 100 ng of total mass.

11. If the total volume of the Library Pool(s) is less than **100 µL**, bring the volume up to 100 µL with nuclease-free water.
12. Vortex the SPRI beads until fully mixed. Add **1.8x** of SPRI beads to the Library Pool(s).



Note: For example, if a Library Pool is 100 µL, add $(1.8 \times 100 \text{ µL}) = 180 \text{ µL}$ of SPRI beads.

13. Vortex the tube(s) for **5 seconds**. Briefly centrifuge (~2 seconds).
14. Incubate tube(s) at room temperature for **5 minutes**.
15. Place the tube(s) in a 1.5 mL magnetic rack and wait for all the beads to bind to the magnet (~3 minutes: ensure the liquid is clear).
16. With the tube(s) still on the magnetic rack, slowly remove and discard the clear supernatant.
17. Without resuspending beads, add **300 µL** of 85% ethanol to the tube(s) using a P1000 and wait **1 minute**.
18. Using a pipette, aspirate and discard the ethanol from the tube(s).
19. Without resuspending beads, add another **300 µL** of 85% ethanol to the tube(s) using a P1000 and wait **1 minute**.

20. Using a pipette, aspirate and discard all of the ethanol from the tube(s) (it may be necessary to remove the final few drops with a P20 pipette). With the tube(s) still on the rack, air dry the beads (~2 minutes).



CRITICAL! Do not over-dry the beads. Over-drying of beads can lead to substantial losses in yield. "Cracking" of the beads is a sign of over-drying.

21. Remove the tube(s) from the magnetic rack. Proceed directly to Section 4.2.

4.2. Blocking & Hybridization

Blockers are added to the library pool to reduce off-target binding. Next, during hybridization, biotinylated probes bind to the BCR repertoire.

1. Add the following reagents individually to each Library Pool from step 4.1.21.

ADD TO EACH LIBRARY POOL	
ITEM	VOLUME (μL)
● Evercode Blocker Solution	7
● Blocker Solution	5
TOTAL	12

2. Resuspend the beads by gentle pipetting with a P20 set to 10 μL.
3. Briefly centrifuge and carefully transfer **12 μL** into each **new 0.2 mL tube(s)** using a P20 set to 15 μL.
4. Heat the Library Pool(s) for **5 minutes** at 95°C in a thermocycler with the lid heated to 105°C, then immediately place at room temperature.

- Prepare a Probe Solution in a **new 0.2 mL tube**. Mix by pipetting.

PROBE SOLUTION		
ITEM	Volume for 1 Library pool (μL)	Volume for 2 Library pools (μL)
● Hybridization Mix	21	42
● Human or Mouse or Transgenic Mouse BCR Panel	4.2	8.4
Nuclease-free Water	4.2	8.4
TOTAL	29.4	58.8

- Heat the Probe Solution for **2 minutes** at 95°C in a thermocycler with the lid heated to 105°C, then immediately cool for **5 minutes** on ice.
- Separately, incubate both the Probe Solution and Library Pool(s) at room temperature for **5 minutes**. For timing, see the figure below.

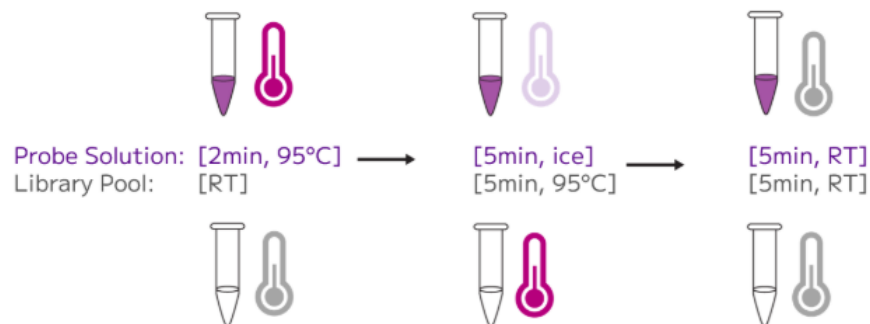


Figure 6: Heating and denaturing steps for Probe Solution and Library Pool are efficiently performed together.

- Set a thermocycler to 70°C with the lid at 85°C for infinite time.
- Vortex the Probe Solution for **5 seconds**. Briefly centrifuge (~2 seconds).
- Transfer **28 μL** of the Probe Solution into each Library Pool to create the Hybridization Reaction.
- Vortex the tube(s) for **5 seconds**. Briefly centrifuge (~2 seconds).

12. Without mixing, add **30 μ L** of ● Hybridization Enhancer to the top of the meniscus of the Hybridization Reaction from step 11.



CRITICAL! Do not mix after adding the Hybridization Enhancer. It should form a distinct layer above the hybridization reaction.

13. Briefly centrifuge tube(s) to ensure there are no bubbles present.

14. Ensure the tube(s) are tightly capped to prevent excess evaporation.

15. Incubate the Hybridization Reaction(s) (72 μ L) at 70°C for **15-17 hours** in a thermocycler with the lid at 85°C.



Note: Hybridizing for less than 15 hours or more than 17 hours will impact hybridization efficiency.

Section 5: BCR Amplification

5.1. Bind and Wash

Streptavidin binder beads capture the hybridized BCR repertoire prior to amplification.

To prepare BCR capture pool for amplification:

1. Gather two heat blocks, set one to 68°C (for 1.5 mL tube) and the other to 48°C (for 2 mL and 5 mL tubes).
2. Equilibrate ●Streptavidin Binder Beads and the SPRI beads (Ampure XP or KAPA Pure Beads) to room temperature for at least **30 minutes**.



Note: See Important Guidelines, "Sublibraries Concentration" for clarifications about the Streptavidin Beads and the SPRI beads in the sample(s).

3. Prepare at least 400 µL of 85% ethanol.
4. Prepare the magnetic rack for 1.5 mL tubes.
5. Gather the following items and handle as indicated below.

ITEM	SOURCE	QTY	HANDLING AND STORAGE
● Bead Wash Buffer A	WT+ BCR 4°C Reagents	1	Heat tube at 68°C and keep at 68°C.
● Bead Wash Buffer B	WT+ BCR 4°C Reagents	1	Heat tube at 48°C and keep at 48°C.
○ Streptavidin Binding Buffer	WT+ BCR 4°C Reagents	1	Heat tube at 48°C for 5 minutes. Then keep at room temperature.
● Streptavidin Binder Beads	WT+ BCR 4°C Reagents	1	Equilibrate at room temperature for at least 30 minutes.
● Enrichment Primer Mix	BCR -20°C Reagents	1	Thaw at room temperature, then place on ice.
● Enrichment Amplification Mix	BCR -20°C Reagents	1	Thaw on ice. Briefly centrifuge before use.

6. Check if precipitate is dissolved, then equilibrate the ○Streptavidin Binding Buffer to room temperature. Keep the ● Bead Wash Buffer A and ● Bead Wash Buffer B in their respective heat blocks.

7. Ensure the ● Streptavidin Binder Beads have been equilibrated to room temperature for at least **30 minutes**. Vortex the ● Streptavidin Binder Beads until mixed.
8. For each pool, add **100 µL** of ● Streptavidin Binder Beads to a new 1.5 mL tube(s) for the hybridization reaction.
9. Add **200 µL** of ○Streptavidin Binding Buffer to the tube(s) with ● Streptavidin Binder Beads. Mix thoroughly by pipetting 10x with a P200 set to 200 µL.
10. Place the tube(s) in a 1.5 mL magnetic rack and wait for all the beads to bind to the magnet (~2 minutes: liquid should be clear).
11. Using a pipette, aspirate and discard the supernatant from the tube(s). Remove tube(s) from the magnetic rack.
12. Repeat steps 9-11 twice for a total of three washes.
13. Add **200 µL** of ○Streptavidin Binding Buffer and resuspend the beads by vortexing until fully homogenized.
14. Heat the resuspended beads at 68°C for **10 minutes** before proceeding to the next step.
15. Set a P200 pipette to 80 µL. After the hybridization reaction from Section 4.2 is complete, open the thermocycler lid and immediately transfer the entire volume of the Hybridization Reaction into a corresponding tube of preheated ● Streptavidin Binder Beads from step 5.1.14. Mix by pipetting.



CRITICAL! The rapid transfer from the 70°C thermocycler in step 4.2.15 is a critical step for minimizing off-target binding. Do not remove the Hybridization Reaction tube from the thermocycler or otherwise allow it to cool to less than 70°C before transferring the solution to the washed Streptavidin Binder Beads. Allowing the Hybridization Reaction to cool to room temperature for more than 5 minutes will result in as much as 10–20% increase in off-target binding.

16. Incubate the tube(s) containing the Hybridization Reaction and ● Streptavidin Binder Beads mixture at 68°C for **5 minutes**.
17. Remove the tube(s) from the heat block. Do not vortex, briefly centrifuge (~2 seconds).
18. Place the tube(s) in a magnetic rack and wait for all the beads to bind to the magnet (~2 minutes: liquid should be clear).
19. Using a pipette, aspirate and discard the clear supernatant from the tube(s).



Note: Some Hybridization Enhancer reagent residue may be visible after supernatant removal and throughout each wash step. This will not affect the final capture product.

20. Remove the tube(s) from the magnetic rack, add **200 μL** of 68°C ● Bead Wash Buffer A. Mix by pipetting.
21. Incubate the tube(s) at 68°C for **5 minutes**. Briefly centrifuge.
22. For the hybridization reaction, transfer the entire volume from step 21 (~200 μL) into a new 1.5 mL tube(s).



CRITICAL! This step reduces background from non-specific binding to the surface of the tube.

23. Place the tube(s) in a 1.5 mL magnetic rack and wait for all the beads to bind to the magnet (~1 minute: liquid should be clear).
24. Using a pipette, aspirate and discard the clear supernatant from the tube(s).
25. Remove the tube(s) from the magnetic rack and add **200 μL** of 48°C ● Bead Wash Buffer B. Mix by pipetting and briefly centrifuge.
26. Incubate the tube(s) at 48°C for **5 minutes** and place ● Bead Wash Buffer B back into the 48°C heat block.
27. Place the tube(s) in a magnetic rack and wait for all the beads to bind to the magnet (~1 minute: liquid should be clear).
28. Using a pipette, aspirate and discard the clear supernatant from the tube(s).
29. Repeat steps 25-28 twice for a total of three washes.
30. Remove any residual supernatant with a P20 pipette. Proceed immediately to the next step.
31. Remove the tube(s) from the magnetic rack and resuspend in **45 μL** of nuclease-free water. Mix by pipetting until homogenized, then incubate on ice. This solution will be referred to as Streptavidin Binding Bead Slurry.
32. Proceed immediately to Section 5.2.

5.2. BCR Amplification

The BCR repertoire is amplified for sequencing.

1. Prepare 400 μ L of 85% ethanol per reaction.
2. Prepare the magnetic rack for 1.5 mL tubes.
3. Mix the Streptavidin Binding Bead Slurry by pipetting.
4. For the hybridization reaction, prepare a PCR mixture in a new 0.2 mL PCR tube(s) as follows. Then, mix by pipetting, centrifuge briefly, and store on ice.

PCR MIXTURE	
REAGENTS	VOLUME (μ L)
Streptavidin Binding Bead Slurry	22.5*
● Enrichment Primer Mix	2.5
● Enrichment Amplification mix	25
TOTAL	50



Note: * When preparing the PCR mixture, only half the slurry is necessary for immediate use. Store the unused slurry at -20°C .

5. Determine the number of PCR cycles required for the total amount of input into the library pool, as shown in the table below.

NUMBER OF PCR CYCLES	
Library Pool (ng)	PCR Cycles
800	13
400	14
200	15
100	16

6. Place the tube(s) into a thermocycler and run the following program

BCR AMPLIFICATION			
Run Time	Lid Temperature	Sample Volume	
~30 min	105°C	50 µL	
Step	Time	Temperature	Cycles
1	45 sec	98°C	1
2	15 sec	98°C	Variable, see above
3	30 sec	60°C	
4	30 sec	72°C	
5	1 min	72°C	1
6	Hold	4°C	1

7. As soon as the program reaches 4°C, place the tube(s) at room temperature and proceed immediately to the next step.
8. Ensure the SPRI beads have been equilibrated to room temperature for at least **30 minutes**. Vortex the SPRI beads until fully mixed. Add **90 µL** of SPRI beads (1.8x) to the tube(s). Vortex for **5 seconds**.



Note: It is not necessary to recover supernatant or remove Streptavidin Binder Beads from the amplified PCR product.

9. Incubate tube(s) at room temperature for **5 minutes**.
10. Place the tube(s) on the high position of the magnetic rack for 0.2 mL tubes and wait for all the beads to bind to the magnet (~2 minutes: liquid should be clear).
11. With tube(s) still on the magnetic rack, remove and discard the clear supernatant.
12. With tube(s) still on the magnetic rack, add **180 µL** of 85% ethanol to the tube(s).
13. Incubate tube(s) at room temperature for **1 minute**.




CRITICAL! Do not over-dry the beads. Over-drying of beads can lead to substantial losses in yield. "Cracking" of the beads is a sign of over-drying.

14. With tube(s) still on the magnetic rack, remove and discard the supernatant.
15. Repeat steps 12-14 once more for a total of 2 washes. Remove any residual ethanol with a P20 pipette.
16. With tube(s) still on the magnetic rack, air dry the beads (~**30 seconds**).
17. Remove the tube(s) from the magnetic rack. Fully resuspend the bead pellet with **32 μ L** of nuclease-free water.
18. Incubate the tube(s) at room temperature for **5 minutes**.
19. Place the tube(s) on the low magnet position of the magnetic rack for 0.2 mL tubes and wait for all the beads to bind to the magnet (~2 minutes: liquid should be clear).
20. With tube(s) still on the magnetic rack, transfer **30 μ L** of the supernatant containing the purified BCR sublibraries into new 0.2 mL tube(s). Store on ice.
21. Proceed to Section 5.3.

5.3. BCR Library Quantification

The concentration and size distribution of the sequencing libraries are measured with fluorescent dyes and capillary electrophoresis.

1. Measure the concentration of the BCR library from Section 5.2 with the Qubit dsDNA HS (High Sensitivity) Assay Kit according to the manufacturer's instructions.
2. Assess the size distribution of the purified DNA with a High Sensitivity DNA Kit on the Agilent Bioanalyzer System according to the manufacturer's instructions. See Figure 7 for the expected size distribution.
3. For sequencing, refer to run configuration details in Appendix B.
-  4. Sequencing libraries can be stored at -20°C for up to 3 months.

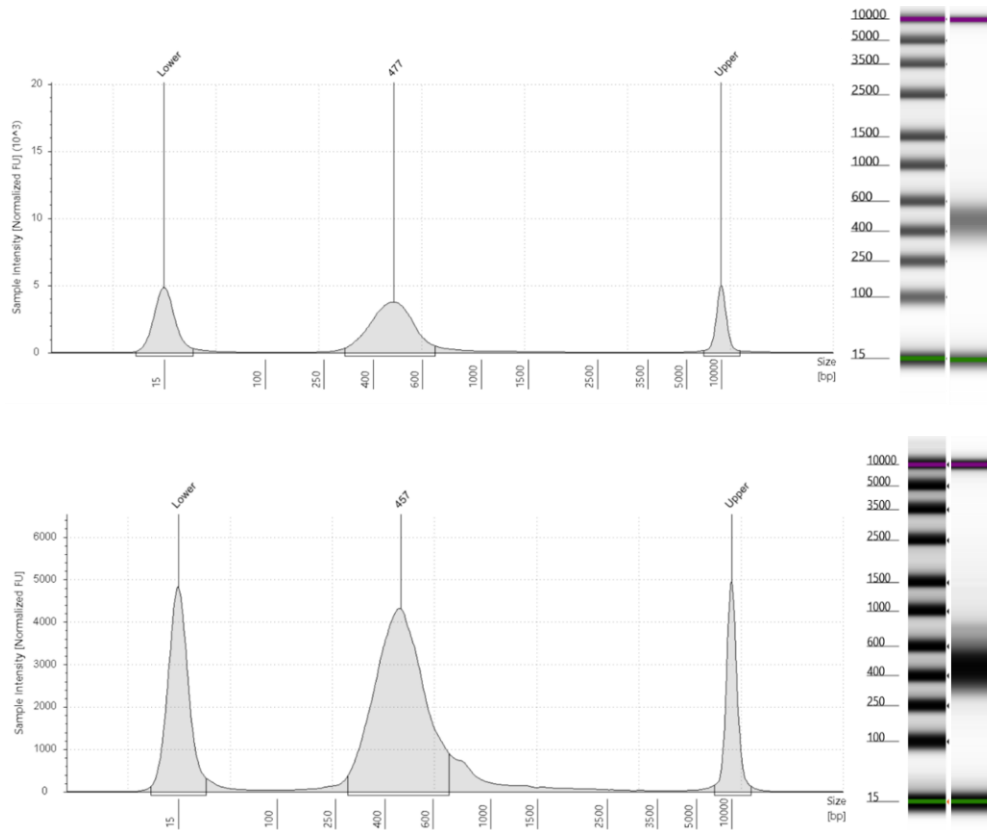


Figure 7: Expected Size Distribution before Illumina Sequencing. Example trace of Human DNA (top) and mouse DNA (bottom) from indexed sublibraries run on a TapeStation.

Note: The traces above are representative of typical TapeStation of DNA from BCR sublibraries. There should be a peak between 400-500 bp. The prominence of the trace is dependent on the amount of DNA loaded into the Bioanalyzer or TapeStation.



Samples with minor deviations can still produce high quality data.

Note: If quantifying DNA with a Bioanalyzer, there may be an additional peak present. If there is a 400-500 bp peak, it should not impact sequencing or data quality, but care should be taken when calculating the library concentration before sequencing.

Appendices

Appendix A: Sublibrary Generation Table

The Sublibrary Generation Table provides guidance for sample dilution in Section 1.5 to achieve a target sublibrary concentration.

Green text (top): Volume of cell suspension in μL (from step 1.5.10) to add to each sublibrary.

Purple text (bottom): Volume of Pre-Lysis Dilution Buffer in μL to add to each sublibrary.

Blue Shading: Serial dilution of cell stock is required to improve sublibrary cell count.

Red Shading: Insufficient cell stock concentration for target sublibrary cell count.

Stock con (cells/uL)	Target Sublibrary Cell Count (cells/sublibrary)													
	200	500	1,000	2,000	5,000	10,000	12,000	12,500	15,000	20,000	25,000	30,000	31,250	62,500
50	4	10	20											
	21	15	5											
100	2	5	10	20										
	23	20	15	5										
200		2.5	5	10	25									
		22.5	20	15	0									
400			2.5	5	12.5	25								
			22.5	20	12.5	0								
600				3.33	8.33	16.67	20	20.83	25					
				21.67	16.67	8.33	5	4.17	0					
800				2.5	6.25	12.5	15	15.63	18.75	25				
				22.5	18.75	12.5	10	9.37	6.25	0				
1,000				2	5	10	12	12.5	15	20	25			
				23	20	15	13	12.5	10	5	0			
1,200				4.17	8.33	10	10.42	12.5	16.67	20.83	25			
				20.83	16.67	15	14.58	12.5	8.33	4.17	0			
1,400				3.57	7.14	8.57	8.93	10.71	14.29	17.86	21.43	22.32		
				21.43	17.86	16.43	16.07	14.29	10.71	7.14	3.57	2.68		
1,600				3.13	6.25	7.5	7.81	9.38	12.5	15.63	18.75	19.53		
				21.87	18.75	17.5	17.19	15.63	12.5	9.38	6.25	5.47		
1,800				2.78	5.56	6.67	6.94	8.33	11.11	13.89	16.67	17.36		
				22.22	19.44	18.33	18.06	16.67	13.89	11.11	8.33	7.64		
2,000				2.5	5	6	6.25	7.5	10	12.5	15	15.63		
				22.5	20	19	18.75	17.5	15	12.5	10	9.38		
2,500				2	4	4.8	5	6	8	10	12	12.5	25	
				23	21	20.2	20	19	17	15	13	12.5	0	
3,000						3.33	4	4.17	5	6.67	8.33	10	10.42	20.83
						21.67	21	20.83	20	18.33	16.67	15	14.58	4.17
3,500						2.86	3.43	3.57	4.29	5.71	7.14	8.57	8.93	17.86
						22.14	21.57	21.43	20.71	19.29	17.86	16.43	16.07	7.14
4,000						2.5	3	3.13	3.75	5	6.25	7.5	7.81	15.63
						22.5	22	21.88	21.25	20	18.75	17.5	17.19	9.38
4,500						2.22	2.67	2.78	3.33	4.44	5.56	6.67	6.94	13.89
						22.78	22.33	22.22	21.67	20.56	19.44	18.33	18.06	11.11
5,000						2	2.4	2.5	3	4	5	6	6.25	12.5
						23	22.6	22.5	22	21	20	19	18.75	12.5
5,500							2.18	2.27	2.73	3.64	4.55	5.45	5.68	11.36
							22.82	22.73	22.27	21.36	20.45	19.55	19.32	13.64
6,000							2	2.08	2.5	3.33	4.17	5	5.21	10.42
							23	22.92	22.5	21.67	20.83	20	19.79	14.58
7,000									2.14	2.86	3.57	4.29	4.46	8.93
									22.86	22.14	21.43	20.71	20.54	16.07
8,000									2.5	3.13	3.75	3.91	7.81	
									22.5	21.88	21.25	21.09	17.19	
9,000									2.22	2.78	3.33	3.47	6.94	
									22.78	22.22	21.67	21.53	18.06	
10,000									2	2.5	3	3.13	6.25	
									23	22.5	22	21.88	18.75	

Appendix B: Sequencing Information

We recommend a minimum sequencing depth of 20,000 reads per cell for whole transcriptome libraries and 5,000 reads per cell for the BCR library. However, ideal sequencing depth is dependent on the sample type and experimental goals. For example, if trying to capture rare cell types in a heterogenous population, deeper sequencing is required. Alternatively, analyzing a homogenous population, more shallow sequencing may be appropriate.

Whole transcriptome sequencing libraries should be diluted and denatured according to the manufacturer’s instructions for the relevant sequencing instrument. We strongly recommend adding 5% PhiX for optimal sequencing quality.

The diagram below illustrates the composition of the sequencing libraries generated. This library structure applies to both the whole transcriptome library and the BCR-enriched library.

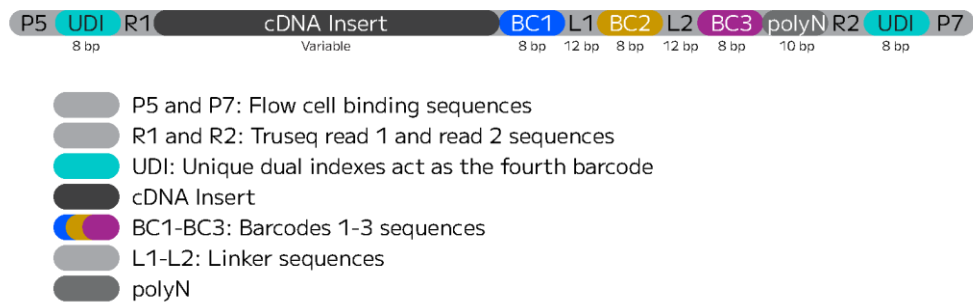


Figure 8: Whole transcriptome sequencing library structure.

Libraries should be sequenced with paired reads using the read structure in the table below. Read lengths longer than those recommended below are acceptable, but additional bases in read 2 are trimmed by the Parse Analysis Pipeline. Note that WT and BCR libraries have different sequencing requirements. The WT and BCR libraries should not be run together; however, they can be run in different lanes.

WHOLE TRANSCRIPTOME ILLUMINA RUN CONFIGURATION			
Run	Function	WT Library Cycles	Note
Read 1	cDNA Insert	64	The DNA product used for this sequencing run should have come from Section 3: Preparing WT Libraries for Sequencing.
i7 Index (Index 1)	Barcode 4/UDI	8	
i5 Index (Index 2)	Barcode 4/UDI	8	
Read 2	Barcodes 1-3	58	

Sequencing BCR libraries requires an Illumina 300 cycle kit. See the table below for details:

BCR ILLUMINA RUN CONFIGURATION			
Run	Function	BCR Library Cycles	Note
Read 1	cDNA Insert	242	The DNA product used for this sequencing run should have come from Section 5: Preparing BCR Libraries for Sequencing.
i7 Index (Index 1)	Barcode 4/UDI	8	
i5 Index (Index 2)	Barcode 4/UDI	8	
Read 2	Barcodes 1-3	58	

The fourth barcode that tags each sublibrary acts as a standard Illumina i7 and i5 indexes. Please refer to the following table to demultiplex UDI Whole Transcriptome and BCR sublibraries.

Sublibrary Index ID	Well Position	i7 Forward Sequence	i5 Reverse Complement Sequence	i5 Forward Sequence
UDI_Plate_WT_1	A1	CAGATCAC	ATGTGAAG	CTTCACAT
UDI_Plate_WT_2	B1	ACTGATAG	GTCCAACC	GGTTGGAC
UDI_Plate_WT_3	C1	GATCAGTC	AGAGTCAA	TTGACTCT
UDI_Plate_WT_4	D1	CTTGTAAT	AGTTGGCT	AGCCAACT
UDI_Plate_WT_5	E1	AGTCAAGA	ATAAGGCG	CGCCTTAT
UDI_Plate_WT_6	F1	CCGTCCTA	CCGTACAG	CTGTACGG
UDI_Plate_WT_7	G1	GTAGAGTA	CATTCATG	CATGAATG
UDI_Plate_WT_8	H1	GTCCGCCT	AGATACGG	CCGTATCT
UDI_Plate_WT_9	A2	GTGAAACT	TACAGACT	AGTCTGTA
UDI_Plate_WT_10	B2	TCATTCCT	AATGCCTG	CAGGCATT
UDI_Plate_WT_11	C2	GGTAGCAT	TGCTTGCC	GGCAAGCA
UDI_Plate_WT_12	D2	ACTTGATC	TTTGGGTG	CACCCAAA
UDI_Plate_WT_13	E2	ATGAGCAT	GAATCTGA	TCAGATTC
UDI_Plate_WT_14	F2	GCGCTATC	CGACTGGA	TCCAGTCG
UDI_Plate_WT_15	G2	TGACCAGT	ACATTGGC	GCCAATGT

Sublibrary Index ID	Well Position	i7 Forward Sequence	i5 Reverse Complement Sequence	i5 Forward Sequence
UDI_Plate_WT_16	H2	TATAATCA	ACCACTGT	ACAGTGGT
UDI_Plate_WT_17	A3	CAAAGTC	CGGTTGTT	AACAACCG
UDI_Plate_WT_18	B3	CGATGTCA	CATGAGGA	TCCTCATG
UDI_Plate_WT_19	C3	CTCAGAGT	TGGAGAGT	ACTCTCCA
UDI_Plate_WT_20	D3	TAATCGAC	TGACTTCG	CGAAGTCA
UDI_Plate_WT_21	E3	CATTTTCT	GGAAGGAT	ATCCTTCC
UDI_Plate_WT_22	F3	CTATACTC	TGTTTCGAG	CTCGAACA
UDI_Plate_WT_23	G3	CACTCACA	AAGGCTGA	TCAGCCTT
UDI_Plate_WT_24	H3	CTCGAACA	CTCGAGTG	CACTCGAG
UDI_Plate_WT_25	A4	CTCTATCG	ATCGGTGG	CCACCGAT
UDI_Plate_WT_26	B4	TCCTCATG	AGGTCTTG	CAAGACCT
UDI_Plate_WT_27	C4	AACAACCG	AGGAAGCG	CGCTTCCT
UDI_Plate_WT_28	D4	GCCAATGT	ACATGTGT	ACACATGT
UDI_Plate_WT_29	E4	TGGTTGTT	ATACAGTT	AACTGTAT
UDI_Plate_WT_30	F4	TCTGCTGT	ATCGCCTT	AAGGCGAT
UDI_Plate_WT_31	G4	TTGGAGGT	TTCGACGC	GCGTCGAA
UDI_Plate_WT_32	H4	TCGAGCGT	TGTCGTTC	GAACGACA
UDI_Plate_WT_33	A5	TGCGATCT	TCCATAGC	GCTATGGA
UDI_Plate_WT_34	B5	TTCCTGCT	TAAGTGTC	GACACTTA
UDI_Plate_WT_35	C5	TTCCATTG	CTGGCATA	TATGCCAG
UDI_Plate_WT_36	D5	TAACGCTG	CTGAGCCA	TGGCTCAG
UDI_Plate_WT_37	E5	TTGGTATG	CTCAATGA	TCATTGAG
UDI_Plate_WT_38	F5	TGAACTGG	CGCATACA	TGTATGCG
UDI_Plate_WT_39	G5	TCCAGTCG	CCGAAGTA	TACTTCGG
UDI_Plate_WT_40	H5	TGTATGCG	CCAGTTCA	TGAACTGG

Sublibrary Index ID	Well Position	i7 Forward Sequence	i5 Reverse Complement Sequence	i5 Forward Sequence
UDI_Plate_WT_41	A6	TGGCTCAG	CAGCGTTA	TAACGCTG
UDI_Plate_WT_42	B6	TATGCCAG	CAATGGAA	TTCCATTG
UDI_Plate_WT_43	C6	GGTTGGAC	ATCCTGTA	TACAGGAT
UDI_Plate_WT_44	D6	GACACTTA	AGCAGGAA	TTCCTGCT
UDI_Plate_WT_45	E6	GAACGACA	ACGCTCGA	TCGAGCGT
UDI_Plate_WT_46	F6	AAGGCGAT	ACAGCAGA	TCTGCTGT
UDI_Plate_WT_47	G6	ATGCTTGA	ACAAGCTA	TAGCTTGT
UDI_Plate_WT_48	H6	AGTATCTG	CATCAAGT	ACTTGATG

Appendix C: Thermocycling Programs

Section 1: *In Situ* cells Barcoding

THAW ROUND 1 PLATE		
Run Time	Lid Temperature	Sample Volume
10 min	70°C	26 µL
Step	Time	Temperature
1	10 min	25°C
2	Hold	4°C

BARCODING ROUND 1			
Run Time	Lid Temperature	Sample Volume	
40 min	70°C	40 µL	
Step	Time	Temperature	Cycles
1	10 min	50°C	1
2	12 s	8°C	3
3	45 s	15°C	
4	45 s	20°C	
5	30 s	30°C	
6	2 min	42°C	
7	3 min	50°C	
8	5 min	50°C	1
9	Hold	4°C	1

THAW ROUND 2 PLATE		
Run Time	Lid Temperature	Sample Volume
10 min	70°C	10 µL
Step	Time	Temperature
1	10 min	25°C
2	Hold	4°C

BARCODING ROUND 2		
Run Time	Lid Temperature	Sample Volume
15 min	50°C	50 µL
Step	Time	Temperature
1	15 min	16°C
2	Hold	4°C

ROUND 2 STOP		
Run Time	Lid Temperature	Sample Volume
5 min	50°C	60 µL
Step	Time	Temperature
1	5 min	16°C
2	Hold	4°C

THAW ROUND 3 PLATE		
Run Time	Lid Temperature	Sample Volume
10 min	70°C	10 µL
Step	Time	Temperature
1	10 min	25°C
2	Hold	4°C

BARCODING ROUND 3		
Run Time	Lid Temperature	Sample Volume
15 min	50°C	60 µL
Step	Time	Temperature
1	15 min	16°C
2	Hold	4°C

CELL LYSIS		
Run Time	Lid Temperature	Sample Volume
15 min	80°C	55 µL
Step	Time	Temperature
1	15 min	65°C
2	Hold	4°C

Section 2: cDNA Capture and Amplification

TEMPLATE SWITCH		
Run Time	Lid Temperature	Sample Volume
60 min	70°C	100 µL
Step	Time	Temperature
1	60 min	42°C
2	Hold	4°C

cDNA AMPLIFICATION			
Run Time	Lid Temperature	Sample Volume	
50-70 min	105°C	100 µL	
Step	Time	Temperature	Cycles
1	3 min	95°C	1
2	20 s	98°C	5
3	45 s	65°C	
4	3 min	72°C	
5	20 s	98°C	Variable, see section 2.3
6	20 s	67°C	
7	3 min	72°C	
8	5 min	72°C	1
9	Hold	4°C	1

Section 3: Sequencing Library Preparation

FRAGMENTATION AND END PREP		
Run Time	Lid Temperature	Sample Volume
35 min	70°C	50 µL
Step	Time	Temperature
1	Hold	4°C
2	5 min	32°C
3	30 min	65°C
4	Hold	4°C

ADAPTER LIGATION		
Run Time	Lid Temperature	Sample Volume
15 min	30°C	100 µL
Step	Time	Temperature
1	15 min	20°C
2	Hold	4°C

INDEXING PCR			
Run Time	Lid Temperature	Sample Volume	
~30 min	105°C	50 µL	
Step	Time	Temperature	Cycles
1	3 min	95°C	1
2	20 s	98°C	Variable, see table in Section 3.5
3	20 s	67°C	
4	1 min	72°C	
5	5 min	72°C	1
6	Hold	4°C	1

Section 5: BCR Amplification

BCR AMPLIFICATION			
Run Time	Lid Temperature	Sample Volume	
~30 min	105°C	50 µL	
Step	Time	Temperature	Cycles
1	45 sec	98°C	1
2	15 sec	98°C	Variable, see Section 5.2.5
3	30 sec	60°C	
4	30 sec	72°C	
5	1 min	72°C	1
6	Hold	4°C	1

Appendix D: Vacuum Concentration

Pooled Sublibraries require at least a concentration of 5 ng/μL per sublibrary. We recommend adding a minimum of 100 ng of each sublibrary to the BCR library pool for a maximum of 800 ng of total input. However, if any sublibraries have less than 100 ng of input, sublibraries can be pooled in equal proportion to a total of 400 ng where the minimum sublibrary input is 50 ng.

When pooling sublibraries in Section 4.1, vacuum concentration can be used rather than SPRI bead concentration. See protocol below.

To vacuum concentrate the Pooled Sublibraries:

1. Pool 100 ng of each indexed library into a 0.2 mL PCR tube. Briefly centrifuge.
2. Dry the pool of sublibraries using a vacuum concentrator without heat or on the lowest heat setting.
3. The dried Library Pool can be stored at -20°C for 1 week. Otherwise, proceed directly to section 4.2 Hybridization, step 4.2.2 should be skipped.

Appendix E: Revision History

Version	Description	Date
1.0	Initial release	May 2024
1.1	Section 4.2: probe Solution volumes updated	June 2024
1.2	Updated box configurations	August 2024
1.3	Section 1.2.17: added a step to accommodate low Input fixation samples Section 2.3.9: updated recommended PBMCs PCR cycles	November 2024
1.4	Workflow adapted to accommodate Mouse BCR library preparation	December 2024
1.5	Workflow adapted to accommodate Transgenic Mouse BCR library preparation	February 2025
1.6	Sections 3.2 and 3.6: Updated SPRI beads selection	July 2025
1.7	Section 3.1.9: Updated step 2 of Fragmentation and End Prep program.	December 2025



parsebiosciences.com

support@parsebiosciences.com

